

# TENDER PINK

## PASSION FOR AESTHETICS



**Tender Pink** is the most innovative system to reproduce the gingival tissue in dental office and laboratory.

4 shades: Pink Dark, Pink Light, Pink Orange, Pink Transparent.

The chromatic effect can be enhanced by use of Stain Blue, White and Red that can be also mixed between them.

**Stain**



**Pink Transparent**



**Pink Light**



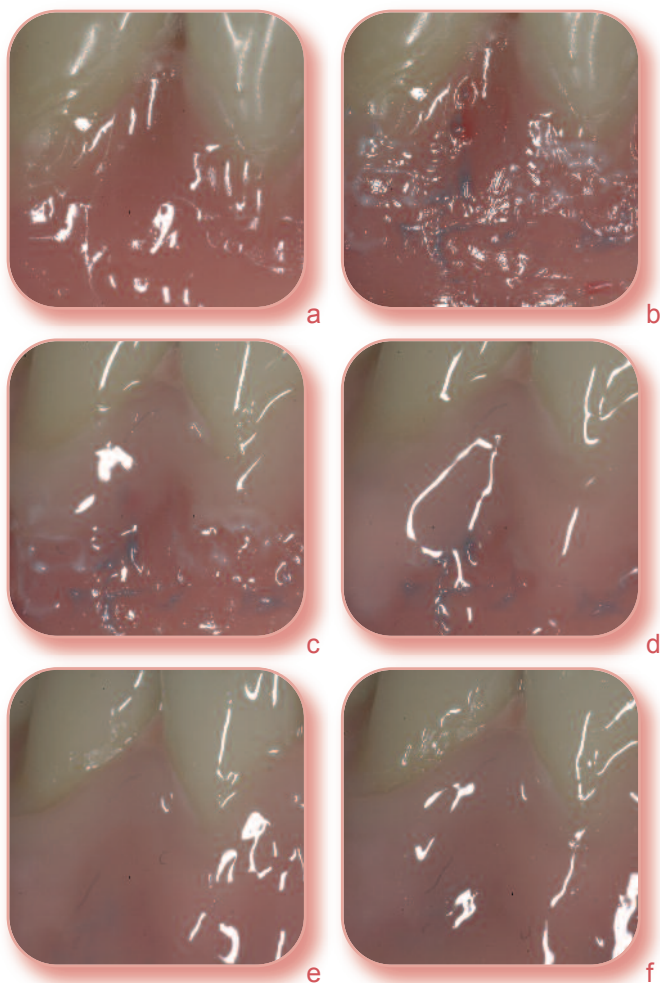
**Pink Dark**



**Pink Orange**



## Gum characterization in removable and implant prosthesis



- a. Tender Bonding Fluid allows the adhesion of methyl methacrylate resin to light curing composite.
- b. Tender Stain **White** increases the opacity and shade of **ischemic papilla** or in bone prominence area, Tender Stain **Red** increases the chromaticity of pink composite, **simulating veins**, Tender Stain **Blue** increases effects in **foramen** and **small veins**.
- c. Tender Pink **Transparent** reproduces the **cervical area** where the gum cover the tooth and not the bone.
- d. Tender Pink **Light** reproduces the area over the **root** where the gum is tight and transparent.
- e. Tender Pink **Dark** reproduces area of the gum less tight and less adherent to the bone, **highly blood supplied** with a red blue shade in the area of the foramen.
- f. Tender Pink **Orange** (available also as **Flow**) is used as first layer or combined with Stain White reproduces the typical colour of **bone prominence of natural flanges**.

## Micerium Enamel Plus

### Tender Pink: The system for gum creation and characterization

#### Shield

**ETOP** Self Adhesive Pink Opaque

#### Shades for gum characterization

**ETS1** Light Curing Stain White

**ETSR** Light Curing Stain Red

**ETS3** Light Curing Stain Blue

#### Tender Pink composite with low wear

**TENDERP** Tender Pink Orange

**TENDERPL** Tender Pink Light

**TENDERPD** Tender Pink Dark

**TENDERPT** Tender Pink Transparent

#### Tender Pink flow with low wear

**TENDERFP** Tender Pink Orange Flow



#### TENDERPKIT Kit Tender Pink

- 1 Tender Pink Opaque
- 3 Stains (blue, red, white)
- 4 Tender Pink Shades

#### Adhesion methyl methacrylate resin to composite

**TEMPF** Temp Bonding Fluid

#### Adhesion ceramic to composite

**ETBOND** Tender Bonding

**ETOCLEAR** Tender Paste Opaque Clear