



Dreve Dentamid Catalogue 20

Innovative Products for Dental Practices
and Laboratories



Core competencies of Dreve Dentamid GmbH

- Silicone products
- Light polymerisation technique
- Thermoforming technique
- Resin pouring technique
- Dental equipment
- 3D Printing



Innovation aus Tradition

Innovation by Tradition

More than 65 years of dental quality products

“Made in Germany”

Our family-run industrial company was founded as a dental laboratory in 1949 in Unna by my parents Inge and Wolfgang Dreve. Due to my father's constant innovations the company grew over the years and developed and produced high quality medical products.

We became well known particularly for thermoforming equipment and materials as well as duplicating silicones. Our denture casting system enjoys consistent popularity. Robust laboratory units, manufactured in Unna, embody our commitment to long-term quality. For the dental practice, we offer a sophisticated range of innovative and economically applicable products.

Our core competencies are the production of silicone materials, light-curing resins, thermoforming materials and laboratory devices. Certified production processes, ongoing staff training and excellent raw materials guarantee the highest quality. By continuously investing in research and development the depth of production has been systematically developed. We introduced the quality management according to DIN ISO 9001 in 1997. Today we are acting international at five locations and we deliver to over 100 countries.

At this point, in the name of the family and all employees, I would like to thank you for your trust.



Warm regards

A handwritten signature in black ink, consisting of stylized, cursive letters that appear to read 'V. Dreve'.

Dr. med. dent. Volker Dreve



7	Impression-taking and Temporary Care
16	3D Printing
22	Thermoforming Technique
39	Castdon System
53	Laboratory Accessories
74	Accessories
76	Index
77	General Terms and Conditions

Dreve Dentamid GmbH
Max-Planck-Straße 31
59423 Unna

Phone +49 2303 8807-40
Fax +49 2303 8807-55
E-mail dentamid@dreve.de
Internet www.dreve.com/dentamid

Techn. Customer Service

Phone +49 2303 8807-3404

National Field Staff

Information about our field staff
can be requested at +49 2303 8807-40

National Department

Phone +49 2303 8807-40
Phone +49 2303 8807-64

Export Department

Phone +49 2303 8807-37
Phone +49 2303 8807-66
Phone +49 2303 8807-732

Or find your contact person
on the internet: www.dreve.com/dentamid

Guarantee


When manufacturing our products, our staff uses selected materials fulfilling the highest technical requirements. Most careful processing guarantees, in addition to our years of experience, an excellent quality level. Our product systems – which means units, materials and appliances – are perfectly matched, as they are tested and developed in our laboratories every day. Due to the years of experience we are able to guarantee a minimum durability of 2 years from date of production on most of our materials. Of course, we are at your disposal after the acquisition of a product.

Service

A full range of additional services belongs to our performance. Professionally educated dental technicians are at your disposal on our hotline to answer your questions about our products. High-ranking experts from Germany and abroad introduce you to our product systems by means of training courses and seminars. Practical training in our education rooms assumes an important place in the further education programme of Dreve Dentamid GmbH. Information about current presentations can be required day and night on our website www.dreve.com.

Quality

The quality standard of Dreve products, of course, follows the current level of science. This is also documented by the certification according to DIN EN ISO 9001, DIN EN ISO 13485, CAN/CSA-ISO 13485: Medical Device Directive and the Japanese PAL standard. Our medical products furthermore fulfil all statutory requirements for medical products in accordance with the guideline for medical devices 93/42/EWG Annex I. Security for patients, dental technicians and dentists by use of biocompatible products is Dreve's main focus.

A large, vertical image on the left side of the page shows a clear, splashing stream of water against a dark red background. In the lower right portion of the water, a metallic dental tool, possibly a bur or a similar instrument, is partially visible, creating ripples and splashes in the water.

Impression-taking and Temporary Care

Our company philosophy "Innovation aus Tradition" can be seen clearly in regards to our silicone materials. Therefore we have contributed substantially to the spreading of the silicone duplication technology in Europe. Today we offer you next to the classical laboratory silicones, a comprehensive, innovative range for the dental practice such as e. g. transparent impression silicones and scannable bite registrations.

With this successful background and a high production volume we offer product security for the dentists' daily work. It goes without saying that our quality standards are always kept to the most reasoned stand of science.

The focus of Dreve products is security for patients and dentists by biocompatible products.

Impression silicones

Dynax® Silicones. A whole system for impression taking.

Our new Dynax® impression silicones guarantee both: precision and ease of use. Optimum hydrophilic properties provide excellent impression precision. The innovative snap-effect improves the dentist's ease of use and the patient comfort: Long processing times but short times in the patient's mouth. The whole impression process takes less than 3 minutes.

Highlights

- Snap-Effect
- Optimized hydrophilic properties
- Scannable surface
- Improved mechanics

Dynax® clear

A real innovation world-wide: Clear, transparent, addition-curing, monophasic impression silicone. Ensures a perfect control already during the impression-taking. Universally applicable and particularly suitable for the implant impression-taking.

Advantages

- visual control of the impression-taking process
- tasteless
- combinable with the opaque correction silicone Dynax® light
- excellent flowing characteristics
- hydrophilic

Technical Data

Final hardness	60 Shore A
Processing time	90s
Removal after	120s
Consistency	medium-type 2
Colour	transparent

Dynax® clear

2 x 50 ml double cartridges incl. 6 mixing tips, green

D6121

8 x 50 ml double cartridges

D6122



► Example of use Dynax® clear



Dynax® putty

Proven and very popular addition-curing impression silicone.

Advantages

- non-sticky, easily kneadable consistency
- suitable for sandwich-, correction-, double mixing technique and valve border impressions
- especially suitable for patients with remaining teeth suffering from periodontitis
- convenient mint taste

Dynax® putty

2 x 450 ml tubs, incl. dosing spoons

D6101

Technical Data

Final hardness	60 Shore A
Processing time	90s
Removal after	90s
Consistency	kneadable-type 0
Farbe	sunny yellow



Dynax® heavy body

Addition-curing "tray type" silicone. A particularity in our range of products and a real alternative to polyether impressions.

Advantages

- pre-impression material available in cartridges
- suitable for sandwich, correction and double mixing technique
- stable thixotropic characteristics
- pressure-developing consistency
- can be combined with Dynax® light

Dynax® heavy body

2 x 50 ml double cartridges incl. 6 mixing tips, green

D6112

8 x 50 ml double cartridges

D6113

Technical Data

Final hardness	70 Shore A
Processing time	90s
Removal after	90s
Consistency	high-type 1
Colour	sky blue

Dynax® light

Addition-curing, thin flowing correction silicone with outstanding detail precision and perfect thixotropy for the correction technique.

Advantages

- easy flowing correction material (light body)
- thixotropic characteristics
- hydrophilic surface
- snap effect
- can be combined with Dynax® putty

Dynax® light

2 x 50 ml double cartridges incl. 12 mixing tips, yellow

D6103

8 x 50 ml double cartridges

D6104

Technical Data

Final hardness	46 Shore A
Processing time	90s
Removal after	90s
Consistency	low-type 3
Colour	emerald green

Impression silicones

Dynax® mono

Addition-curing precision impression silicone. A perfect impression-taking with only one material!

Advantages

- stable/thixotropic characteristics
- for the monophasic method
- can be combined with Dynax® light

Technical Data

Final hardness	58 Shore A
Processing time	90s
Removal after	90s
Consistency	medium-type 2
Colour	lavender violet

Dynax® mono

2 x 50 ml double cartridges incl. 6 mixing tips, green

D6106

8 x 50 ml double cartridges

D6107

Zerosil® soft

A very popular addition-curing impression silicone, high-quality, but economical alternative to alginate, especially for situation impressions.

Advantages

- easy and fast application due to 380 ml huge cartridge system
- endlessly storable impressions
- disinfectable
- compatible with all sorts of plaster
- can be filled several times

Technical Data

Final hardness	40 Shore A
Processing time	120s
Removal after	120s
Consistency	medium-type 2
Colour	orange

Zerosil® soft

2 x 500 ml tubes

D48411

2 x 875 ml tubes

D4841

380 ml cartridge

D5119



► Example of use Zerosil® soft



Dynax® adhäsiv

For the adhesion between impression tray and silicone impression material, high adhesion and still easy cleaning of the tray.

Dynax® adhäsiv

20 ml bottle with brush insert for prefabricated metal or plastic trays, colour: red

D6114

20 ml bottle Dynax adhäsiv plus with brush insert for individual trays, colour: blue

D6124



► Survey of impression materials – Which product for which technique?

Indication	Technique						Material					
	Double mixing technique	Correction	Sandwich	Monophase	Function	Situation	Dynax® clear	Dynax® heavy body	Dynax® light	Dynax® mono	Dynax® putty	Zerosil® soft
Crown and bridge impressions	•	•	•	•			•	•	•	•	•	
Inlay and onlay impressions	•	•	•	•			•	•	•	•	•	
Pick-up impressions e. g. for implants		•		•			•	•		•		
Functional impressions					•					•		
Fixation impressions				•				•		•		
Relining impressions				•					•	•		
Pressure spot indicator				•					•	•		
Impressions for temporaries				•		•				•		•
Situation impressions				•		•						•
Impressions of the opposite jaw				•		•						•

Bite registrations

StoneBite®

Addition-curing silicone on an elastomer basis for bite registration with an extremely high final hardness of 48 Shore D, which presents an absolutely precise and reliable working base to the user.

Application

- bite registrations
- registration key for bearing device registration

StoneBite®

2 x 50 ml double cartridges incl. 12 mixing tips, pink and 12 intra-oral application tips

D504872

4 x 50 ml double cartridges

D504873

Scannable versions see page 20.

Technical Data

Final hardness	48 Shore D
Processing time	30 sec. at 23 °C
Removal after	80 sec. at 37 °C
Consistency	medium-type 2
Colour	orange



► Example of use StoneBite®



Regofix transparent

A highlight: transparent bite registration material, practically free of filler materials and nevertheless high final hardness and spontaneous recovery from deformation.

Advantages

- easy to cut
- not opaque to x-rays

Application

- ideal for controlled bite registration in difficult cases
- matrix material for light-curing composites of anterior and lateral teeth
- for fast and uncomplicated manufacturing of x-ray splints

Technical Data

Final hardness	70 Shore A
Processing time	30s at 23°C
Removal after	90s at 37°C
Consistency	medium-type 2
Colour	transparent



Regofix transparent

2 x 50 ml double cartridges incl. 12 mixing tips, green

D504876

8 x 50 ml double cartridges

D504877

Regofix opak

Our classical bite registration material, fast, hard and precise.

Advantages

- very good cutting and milling characteristics

Application

- each kind of bite registration
- registration key for bearing device registration

Technical Data

Final hardness	90 Shore A
Processing time	30s at 23°C
Removal after	90s at 37°C
Consistency	high-type 1
Colour	blue



Regofix opak

2 x 50 ml double cartridges incl. 12 mixing tips, green

D504874

8 x 50 ml double cartridges

D504875

► Example of use Regofix transparent



Temporary C&B materials

Fixtemp C&B 4:1

Automatically mixable composite in a ratio of 4:1, for manufacturing of temporary crowns, bridges, inlays and onlays of outstanding quality. The breaking strength is unbelievably high, despite a temperature development which is not damaging the dental pulp during the intra-oral setting. The safety-cartridge system ensures a fast and easy application.

Fixtemp C&B 4:1 50 ml double cartridge incl. 10 mixing tips, light blue

Colour: A1	D50391
Colour: A2	D50392
Colour: A3	D50393
Colour: A3,5	D50394
Colour: B1	D50395
Colour: Bleach X	D50396
Colour: D2	D50399

Fixtemp C&B 4:1 5 x 50 ml double cartridges incl. 50 mixing tips, light blue

Colour: A2	D503925
Colour: A3	D503935

Technical Data

Content	50 ml
Compressive strength	220 MPa
Bending strength	98 MPa
	(according to DIN 4049)
Tensile strength	36 MPa
Water absorption	10 µg/mm ³



Fixtemp C&B 10:1

Further improvement of the physical properties of our Fixtemp material led to an excellent accuracy of fit, abrasion is reduced to the absolute minimum. Consequently grinding and polishing are once more simplified.

Fixtemp C&B 10:1 50 ml double cartridge incl. 10 mixing tips, light blue

Colour: A1	D60391
Colour: A2	D60392
Colour: A3	D60393
Colour: A3,5	D60394
Colour: B1	D60395
Colour: Bleach X	D60396
Colour: D2	D60399

Fixtemp C&B 10:1 5 x 50 ml double cartridges incl. 50 mixing tips, light blue

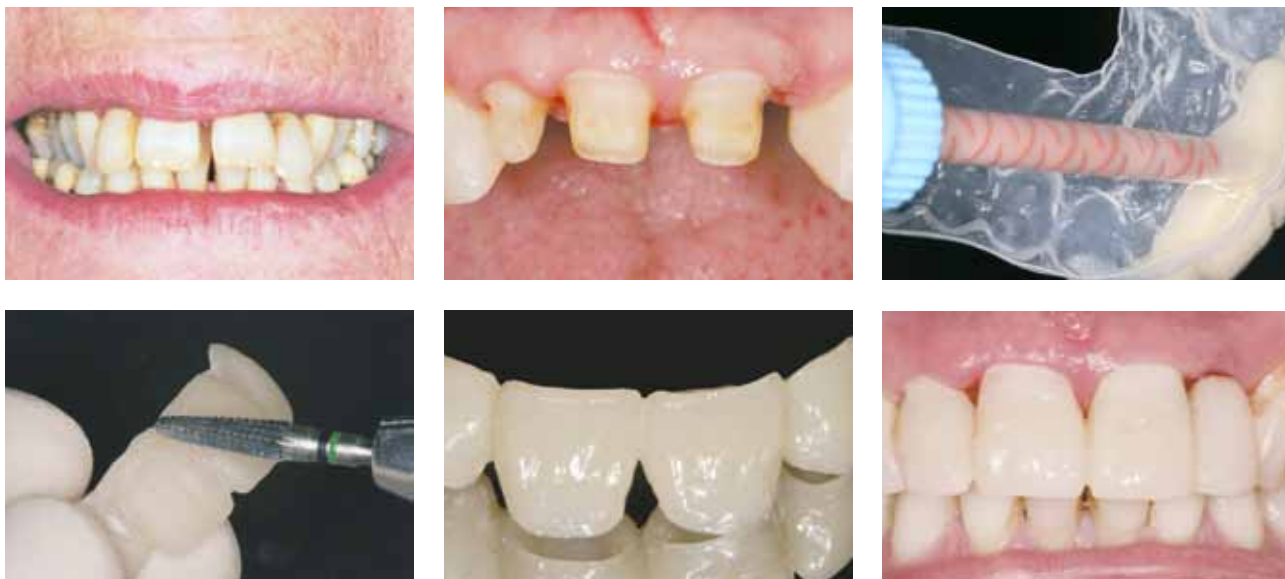
Colour: A2	D603925
Colour: A3	D603935

Technical Data

Processing time	45s
Curing in mouth	ca. 80s
End of curing	6 min
Compressive strength	ca. 300 MPa
Bending strength	ca. 95 MPa
	according to DIN 4049



► Example of use Fixtemp C&B



Fixtemp cement

Eugenol-free fixing cement containing zinc oxide for temporary dentures, ideally combinable with Fixtemp C&B. The double chamber syringe enables a direct application and guarantees a fast and hygienic operating without problems.

Technical Data

Processing time	>1 Min.
Curing time in the mouth	ca. 4-7 Min.
Removal of surplus after setting	ca. 5-6 Min.
Compressive strength	ca. 8 MPa
Film thickness	<20µm

Fixtemp cement

8 g double chamber syringe incl. 5 mixing tips, brown

D503931

On the safe side: HIBC for more efficiency and patient safety

With the „Health Industry Bar Code“(HIBC) you scan the future of every single cartridge. HIBC replaces the outdated barcodes and facilitates the uninterrupted documentation of production lot and expiration date. Manual input becomes redundant. The supply chain from Dreve via the retailer to your clinic is completely covered with a scan only.

A true benefit also for your in-house logistics!

► www.hibc.de



3D Printing

Manufacturing processes on the basis of digital technologies become more and more important in the dental sector. Due to our long-time experience with regards to silicone and resin production we are able to offer you convincing materials in the user environment of these manufacturing processes.

So e. g. our scannable bite registration material on the basis of A-silicones with patented filler material technology or our high-contrast spray for intra-oral optic scans have become extremely successful.

Security for patients, dental technicians and dentists by use of biocompatible products is Dreve's main focus.



FotoDent® flash

High performance light-curing unit with Xenon stroboscope flash lamps for the final curing of 3D-printed components. The parts are completely cured in an inert gas atmosphere – without any inhibition layer, thus providing that the materials reach their final mechanical properties and biocompatibility. In the development of the unit the system concept played a central part: With the FotoDent® flash the elements of a complete building platform of the D30/D40 RapidShape printer can be cured.

Technical Data	
Dimensions (H x W x D)	195x517x295 mm
Polymerisation chamber	40x140x180 mm
Weight	16,6 kg
Voltage	230 V/50 Hz, 220 V/60 Hz, 115 V/60 Hz
Power input	550 W
Maximum operating pressure	5 bar (70psi)
Flash frequency	10 Hz ± 2

FotoDent® flash

red

D35200

anthracite

D35201



► Example of use FotoDent® flash



3D Printing



FotoDent® splint

Light-curing resin for the production of bruxism- as well as occlusal splints. The printed splints are break-proof and have a smooth surface. Splints made from FotoDent® are biocompatible and show a long-term stability.

FotoDent® splint

0,5kg bottle **D35801**
1,0kg bottle **D35800**

Technical Data

Colour	transparent
Flexural modulus	>600 MPa
Flexular strength	>40 MPa
Elongation at break	>20 %



FotoDent® denture

Light-curing resin for the production of denture bases. The use of this resin enables most accurate results with excellent dimensional stability. FotoDent® denture is colour stable and does not contain any methyl methacrylate.

FotoDent® denture

0,5kg bottle **D35501**
1,0kg bottle **D35500**

Technical Data

Colour	pink transparent
Flexural modulus	>2200 MPa
Flexular strength	>95 MPa
Elongation at break	5-7 %
Hardness	>85 Shore D



FotoDent® guide

Light-curing resin for the production of dental drill guides. Drill guides made from FotoDent® guide are dimensionally stable and biocompatible.

FotoDent® guide

0,5kg bottle **D35601**
1,0kg bottle **D35600**

Technical Data

Colour	blue transparent
Flexural modulus	>1700 MPa
Flexular strength	>75 MPa
Elongation at break	10-15 %
Hardness	>85 Shore D



FotoDent® tray

Biocompatible, light-curing resin for the production of individual impression trays. High reactivity, low viscosity. The printed trays show a smooth surface, manual finishing is considerably reduced.

FotoDent® tray

0,5kg bottle **D35301**
1,0kg bottle **D35300**

Technical Data

Colour	green
Flexural modulus	>2000 MPa
Flexular strength	>75 MPa
Hardness	>80 Shore D



www.dreve.com



FotoDent® cast

Light-curing resin for the production of forming parts for dental casts, burns without residue. The material is compatible with all commercially available investment materials.

FotoDent® cast

0,5kg bottle

D35101

1,0kg bottle

D35100

Technical Data

Colour	red transparent
Flexural modulus	>2000 MPa
Flexular strength	>100 MPa
Elongation at break	7,5–11 %
Hardness	80-90 Shore D



FotoDent® model

Light-curing resin for the production of dental working models for orthodontics and prosthetics. Highly form- and break-stable, abrasion-, moisture-, and light-resistant.

FotoDent® model

0,5kg bottle

D35401

1,0kg bottle

D35400

Technical Data

Colour	beige opaque
Flexural modulus	>1750 MPa
Flexular strength	>85 MPa
Elongation at break	11–15 %
Hardness	80-85 Shore D



FotoDent® gingiva

Light curing resin for the production of gingiva masks. Durably soft-remaining and flexible. The material can perfectly be combined with the working models made of FotoDent® model resin.

FotoDent® gingiva

0,5kg bottle

D35701

1,0kg bottle

D35700

Technical Data

Colour	pink
Tensile strength	up to approx. 2,8 MPa
Tensile elongation	up to approx. 55%
Recovery after deformation	100%
Hardness	ca. 60 Shore A



FotoDent® setup

Light-curing resin for the production of orthodontic set-up models. The material is above all characterised by its increased building speed. The set-up models are very well suitable for the thermoforming technique.

FotoDent® setup

0,5kg bottle

D35901

1,0kg bottle

D35900

Technical Data

Colour	maize yellow
Viscosity	approx. 1,2 Pas
Flexular strength	> 100 MPa
Bending strain	approx. 6 %
Flexural modulus	> 2000 MPa

3D Printing

BlueSpray

The ideal appliance for optical scans (intra-oral or of the model).

Advantages

- spray rich in contrast
- good visibility due to blue colour
- excellent scanning
- easy to remove (washable)
- particularly long application nozzle

BlueSpray

50 ml spray can

D5135



StoneBite® scan

Scannable bite registration material on the basis of A-silicone, possessing a high final hardness. Due to special material additions appropriate for usage in CAD/CAM technology.

Advantages

- stable, thixotropic characteristics
- very good cutting and milling characteristics
- excellently scannable

Technical Data

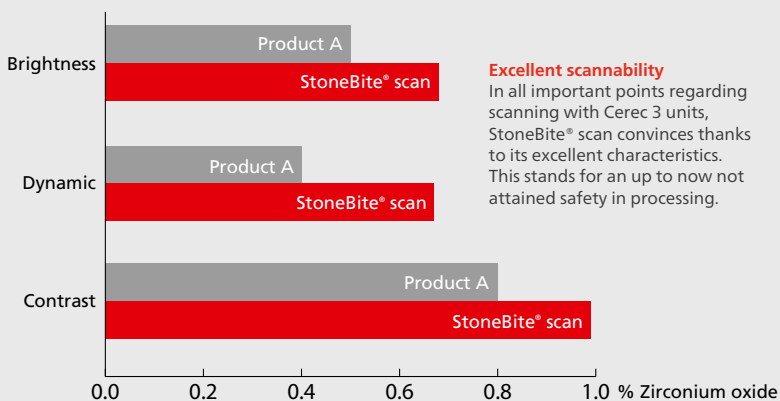
Colour	grey
Final hardness	32 Shore D
Processing time	30 sec. at 23 °C
Removal after (incl. Processing time)	80 sec. at 37 °C
Consistency	Type 2
Strain in compression	< 2 %
Recovery from deformation	99.9 %

StoneBite® scan

2 x 50 ml double cartridges incl. 12 mixing tips, pink and 12 intra-oral tips

D504870

Comparison of scannability of different scannable bite registration materials; measurements against zirconium oxide standards.



GumQuick scan

Addition-curing silicone for the production of flexible and scannable gingiva masks in the CAD/CAM technique.

Advantages

- Optimum scannability/readability by all commercially available dental scanners
- The flowing characteristics ensure exact working with excellent reproduction of details
- Long dimensional constancy

Contents

- 2 x 50 ml double cartridges with 12 mixing tips, light blue
- 10 ml bottle DuoSep

GumQuick scan

D504890

Technical Data

Processing time	1:30 min.
Removal after	6:30 min.
Final hardness	65 Shore A
Tear resistance	4.5 MPa
Elongation at break	175 %



► Example of use GumQuick scan



Thermoforming Technique

It was us who introduced the thermoforming technique, and thus kind of revolutionised dental laboratories. Still very much convinced of this method, we continue to work on improvements to the thermoforming technique with high-end units as well as foils especially adapted to different applications. Convince yourself of the versatile possibilities – from individual sports mouthguards to anti-snoring devices.



Drufomat scan S

The advanced development of our High-End thermoforming unit provides best user-friendliness and constantly precise final results.

Colour display

- Angle adjustment enables glare free read-off at any time
- User-friendly illustrated and guided setup
- Stored manual

Optimised scanner

- Glare free scanning (no light scatter)
- Large scanner field
- High scanner sensitivity (also reads scanty or poor barcodes)

Additional safety features

- 2-hand-protection when driving down the piston
- when the heater is switched on, red LEDs indicate the danger zone

Inclusive

- base range of blanks
- bowl for granules
- air connection hose

Technical Data

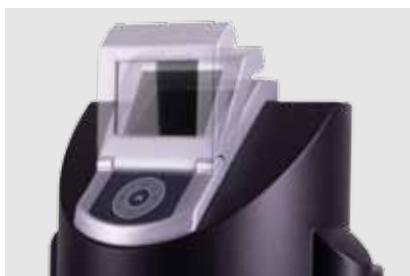
Power supply	115–240 V/50–60 Hz
Power consumption	max. 315 W
Dimensions (H x W x D)	460 x 290 x 290 mm
Weight	16 kg
Pressure	variably adjustable from 2–6 bar (19–87 psi)
Usable blanks	all with Ø 120 mm or larger

Drufomat scan S

red	115-240 V/50-60 Hz	D3500
matte black	115-240 V/50-60 Hz	D3500X1
special colour (RAL-colour chart)	115-240 V/50-60 Hz	D3500X2



► Example of use Drufomat scan S



Thermoforming Technique

Drufomat scan

High-quality thermoforming unit based on the well known Drufomat technique and combined with the latest material recognition software as well as outstanding design.

Highlights

- High-end system which can be run very easily
- Integrated bar code scanner identifies foil codes
- High operating pressure of 6 bar for all professional applications

Additional safety features

- 2-hand-protection when driving down the piston
- When the heater is switched on red LEDs indicate the danger

Inclusive

- base range of blanks
- bowl for granules
- air connection hose

Technical Data

Power supply	115–240 V/50–60 Hz
Power consumption	max. 315 W
Dimensions (H x W x D)	460 x 290 x 290 mm
Weight	16 kg
Pressure	variably adjustable from 2–6 bar (19–87 psi)
Usable blanks	all with Ø 120 mm or larger



PRODUCT
VIDEO

www.dreve.com

Drufomat scan

red	115–240 V/50–60 Hz	D3300
silver	115–240 V/50–60 Hz	D3300X1
special colours (RAL-colour chart)	115–240 V/50–60 Hz	D3300X2



► Example of use Drufomat scan



Drufosmart scan

Pressure forming unit for all thermoforming applications. Simplest handling due to automatic material recognition and indication of all material parameters on a large display. Very good results due to a variably adjustable operating pressure of 2–4 bar and vertical blank adaptation.

Advantages

- Suitable for all blanks with material thicknesses between 0.1 mm and 5 mm
- Integrated bar code scanner identifies blank codes
- Simple operation due to self-explaining operator keyboard and extensive display information
- Overheating protection because of an automatic switch-off of the heater after end of heating time
- Digital and acoustic control of heating and cooling phase
- Secure application due to 2-hand-protection

Inclusive

- base range of blanks
- air connection hose

Drufosmart scan

red	115-240 V/50/60 Hz	D3400
silver	115-240 V/50/60 Hz	D34001

Technical Data

Power supply	115–240 V/50–60 Hz
Power consumption	max. 275 W
Dimensions (H x W x D)	415 x 290 x 290 mm
Weight	14 kg
Pressure	4 bar (58 psi)
Usable blanks	all with Ø 120 mm or larger



Drufosmart

Basic pressure thermoforming unit as alternative to vacuum thermoforming devices. Very good results due to a max. operating pressure of 2.5 bar and vertical blank adaptation.

Advantages

- Suitable for all blanks with material thicknesses between 0.1 mm and 5 mm
- Semi-automatic operation due to easy time-setting
- Overheating protection by automatic switch-off of the heater after end of heating time
- Digital and acoustic control of heating and cooling phase
- Secure application due to 2-hand-protection
- With an operating pressure of 2.5 bar the Drufosmart offers a precise pressure, 3 times higher than that of vacuum thermoforming units

Inclusive

- base range of blanks
- air connection hose

Drufosmart	Special voltage available on request	
red	230 V/50/60 Hz	D3200
red	115 V/50/60 Hz	D3200XA
silver	230 V/50/60 Hz	D32001
silver	115 V/50/60 Hz	D32001XA

Technical Data

Power consumption	max. 275 W
Dimensions (H x W x D)	415 x 290 x 290 mm
Weight	14 kg
Pressure	2.5 bar (36 psi)
Usable blanks	all with Ø 120 mm or larger

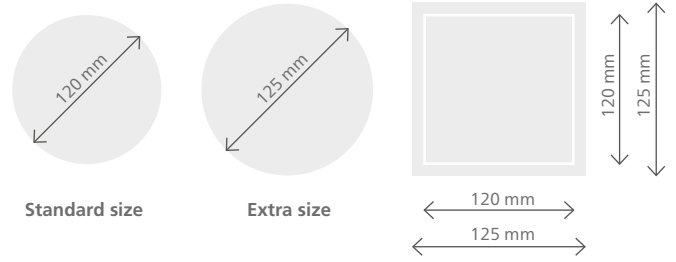


Thermoforming Technique

Thermoforming blanks

All Dreve thermoforming materials have a standard diameter of 120 mm. All item numbers listed up in the catalogue refer to this standard size. The following extra sizes of transparent blanks and blanks of one colour are available on request:

- blanks with a diameter of 125 mm
- square-shaped blanks with a side length of 120 and 125 mm



Application	Product	Strength				
		2 mm	3 mm			
Base plates	Drufoplast	2 mm	3 mm			
	Drufoplast (incl. tray handle)	3 mm				
Bleaching	BioBleach® hard	0.5 mm				
	BioBleach® soft	1 mm				
	Drufosoft®	1 mm	1.5 mm			
Matrix	Drufolen H	0.6 mm	0.8 mm			
	Drufolen W	0.45 mm	0.65 mm	0.8 mm	1 mm	
Custom-made trays	Drufoplast	3 mm				
	Drufoplast (incl. tray handle)	3 mm				
Orthodontic devices	Biolit D	2 mm				
	Biolon	2 mm	3 mm			
Mouthguards	Biolon	2 mm				
	Drufosoft® transparent	2 mm	3 mm	4 mm		
	Drufosoft® colour	3 mm	4 mm			
	Drufosoft® bicolour	3 mm				
	Drufosoft® tricolour	3 mm				
Space maintainers	Drufolen W	0.65 mm	0.8 mm			
	UZF (Underlay blanks)	0.1 mm				
Positioners/Retainers	Biolon	0.75 mm				
	Drufosoft® transparent	1.5 mm	2 mm	3 mm	4 mm	5 mm
	Drufosoft® colour	3 mm	4 mm			
	Drufosoft® bicolour	3 mm				
	Drufosoft® tricolour	3 mm				
	Drufosoft® pro	3 mm				
Production of temporaries	Biolon	0.5 mm	0.75 mm			
	Drufolen H	0.6 mm	0.8 mm			
X-ray splints	Biolit D	1 mm	2 mm			
	Biolon	1 mm	1.5 mm	2 mm		
	Drufoplast (incl. tray handle)	3 mm				
Splint therapy	Biolit D	1 mm	2 mm			
	Biolon	0.75 mm	1 mm	1.5 mm	2 mm	3 mm
	Drufosoft® pro	3 mm				
	Kombiplast	2 mm	3 mm	4 mm		
Bandage plates	Biolit D	1 mm	2 mm			

BioBleach® hard

Thermoforming blank made of polyethylene, including insulation foil, for the production of stable bleaching/medication splints, ending at the gingival margin.

Characteristics

- slightly flexible, also suitable for situations with slight undercut areas
- clear-transparent
- bonds with acrylate

BioBleach® hard clear-transparent, Ø 120 mm
0.5 mm 25 pieces **D420015**

BioBleach® soft

Thermoforming blank made of ethyl vinyl acetate copolymer for the production of soft, bleaching/medication splints extending the gingival margin.

Characteristics

- high form constancy, 95 Shore A
- transparent

BioBleach® soft clear-transparent, Ø 120 mm
1 mm 20 pieces **D4300**

Biolon

Thermoforming blank made of polyethylene terephthalate, including insulation foil for improved and endured transparency, for the production of:

- hard occlusion splints
- bases for occlusion splints
- bases for orthodontic devices

Characteristics

- visco-plastic
- clear-transparent
- bonds with acrylate

Biolon clear-transparent, Ø 120 mm

0.5 mm	25 pieces	D420001
0.5 mm	50 pieces	D420002
0.75 mm	20 pieces	D420003
0.75 mm	40 pieces	D420004
1 mm	25 pieces	D420005
1 mm	50 pieces	D420006
1.5 mm	30 pieces	D420007
1.5 mm	60 pieces	D420008
2 mm	20 pieces	D420009
2 mm	60 pieces	D420010
3 mm	10 pieces	D420011
3 mm	50 pieces	D420012

Biolit D

Thermoforming blank made of polycarbonate for the production of:

- bandage plates
- drilling splints
- orthodontic devices
- various splints

Characteristics

- hot sterilisable
- predrying required (4 hours at 80 °C per mm blank thickness)
- clear-transparent
- bonds with acrylate

Biolit D clear-transparent, Ø 120 mm

1 mm	10 pieces	D420013
2 mm	10 pieces	D420014

Example of use
BioBleach® hard/
BioBleach® soft



Example of use
Biolon



Example of use
Biolit D



Thermoforming Technique

Drufolen H

Thermoforming blank made of polypropylene for the production of:

- matrix
- transfer caps (e. g. brackets)
- stencils for the production of temporaries

Characteristics

- hard-flexible consistency
- burns without residue
- available in Ø 42 mm for manual hand adapters
- does not bond with acrylate

Drufolen H		natural, Ø 120 mm
0.6 mm	40 pieces	D423641
0.8 mm	40 pieces	D423681
Drufolen H		natural, Ø 42 mm
0.6 mm	150 pieces	D4237442

Drufosoft® pro

Thermoforming blank made of ethyl vinyl acetate for the production of:

- hard-flexible occlusion splints
- positioners
- bruxism splints

Characteristics

- hard-flexible, 95 Shore A
- high recovery from deformation
- can be laminated

Drufosoft® pro		transparent, Ø 120 mm
3 mm	10 pieces	D4230
4 mm	10 pieces	D4231
5 mm	10 pieces	D4232

Drufolen W

Thermoforming blank made of polyethylene for the production of:

- matrix with undercut areas
- space maintainers used for medical splints

Characteristics

- soft flexible consistency
- burns without residue
- available in Ø 42 mm for manual adapters

Drufolen W		natural, Ø 120 mm
0.45 mm	40 pieces	D423441N
0.65 mm	40 pieces	D423461N
0.8 mm	40 pieces	D423481N
1 mm	30 pieces	D423401N
Drufolen W		blue, Ø 120 mm
0.65 mm	40 pieces	D423461B
0.8 mm	40 pieces	D423481B
Drufolen W		natural, Ø 42 mm
0.45 mm	150 pieces	D42384N42
0.65 mm	100 pieces	D42386N42
0.8 mm	100 pieces	D42388N42

Example of use
Drufolen H



Example of use
Drufolen W



Example of use
Drufosoft® pro



Example of use
Drufoplast with
tray handles



Drufoplast

Thermoforming blank made of polystyrene for the production of:

- custom-made impression trays
- base plates for bite-takings
- base plates for set-ups

Characteristics

- extremely break-resistant

Drufoplast		pink, Ø 120 mm
2 mm	15 pieces	D4210Z
3 mm	30 pieces	D42081Z

Optionally available

Drufoplast tray handles		D4294Z
pink, 50 pieces		



Example of use
Drufoplast
incl. tray handle



Drufoplast (incl. tray handle)

Thermoforming blank made of polystyrene for the production of:

- transparent custom-made impression trays
- x-ray splints
- base plates for bite-takings
- base plates for set-ups

Characteristics

- extremely break-resistant
- includes tray handle

Drufoplast		clear-transparent, Ø 120 mm
3 mm	10 pieces	D4214
3 mm	100 pieces	D4215

Example of use
Drufoplast



Kombiplast

Thermoforming blank made of PETG/EVA, including insulation foil for improved and endured transparency, for the production of:

- occlusion splints for more comfortable wearing

Characteristics

- hard surface, soft inner side
- bonds with acrylate

Kombiplast		clear-transparent, Ø 120 mm
2 mm	10 pieces	D420016
3 mm	10 pieces	D420017
4 mm	10 pieces	D420018

Example of use
Kombiplast



Thermoforming Technique

UZF (Underlay blank)

Thermoforming blank made of styrene/butadiene copolymer for the production of space maintainers for shrinkage-compensation of the C+B modellation.

Characteristics

- very thin, plastification only possible in combination with other blanks (e. g. Drufolen)
- available in Ø 42 mm for manual adapters



Example of use
UZF (Underlay blank)

UZF (Underlay blank) red, Ø 120 mm
0.1 mm 100 pieces **D42470**

UZF (Underlay blank) red, Ø 42 mm
0.1 mm 100 pieces **D42474X42**

DocSnoreNix®

Snoring results from a blockade of the respiratory system during sleep. While sleeping the tension in the muscles is released and thus the throat is narrowed. The respiratory air is pressed through the narrowed throat and the soft palate begins to vibrate, producing the typical snoring noises. If the flapped tongue falls back into the throat this might even lead to a complete blocking which can result in the periodical interruption of breathing (apnoea).

DocSnoreNix®, our newly developed and patented SNX-protrusion system according to Dr. Schmitt-Bylandt, brings the patient's lower jaw into an individually determined protruded position during sleep. By doing so the throat is widened and the typical danger of blocking is decisively reduced.

Unique, super-elastic connecting elements between upper and lower jaw allow any kind of movement of the jaw when awake, e. g. while swallowing, and the strain on the mandibular joint is significantly reduced. The delicate design of the spring elements provides for an excellent wearing-comfort, which leads to a high acceptance by the patient.



**PRODUCT
VIDEO**

www.dreve.com

DocSnoreNix® Starter Set

Contents

- Pair of pliers
- 1 x patient set of protrusion springs
- Thermoforming blanks (2 x Kombiplast 3 mm)
- Protrusion calibre
- Lightdon Gel, 20 ml transparent
- Lightdon Bonding, 10 ml bottle
- UltraTrimm medium
- Accessories
- Manual

DocSnoreNix® Starter Set **D4600**



Optionally available for DocSnoreNix®

DocSnoreNix® Set	D4601
Contents:	
1 set of springs	
2 x Kombiplast 3 mm	
Lightdon Gel, 20 ml transparent	
1 patient set of protrusion springs	D4602
Pair of pliers DocSnoreNix®	D4603
Protrusion calibre	D4604
Lightdon Gel	D3816
20 ml, transparent	
Lightdon Bonding	D38223B
10 ml bottle	
Kombiplast 3 mm	D420017
10 pieces	
UltraTrimm medium	D43752
12 grinding wheels Ø 28 mm/thickness 14 mm	
4 support discs	
1 mandrel	
UltraTrimm light	D43753
12 grinding wheels Ø 28 mm/thickness 14 mm	
4 support discs	
1 mandrel	
Fillin	D42541
60 g bar, natural coloured	



► Example of use DocSnoreNix®



Thermoforming Technique

Dreve Junior

is a mouthguard made of two Drufosoft® blanks. Recommended for sportsmen up to an age of 14 years. It is manufactured from:

- 1 blank Drufosoft® transparent 120 x 2 mm
- 1 blank Drufosoft® colour 120 x 3 mm

Dreve Senior

is a mouthguard made of two Drufosoft® blanks. Recommended for most contact sports, e. g. handball, basketball, squash, American Football etc. It is manufactured from:

- 1 blank Drufosoft® transparent 120 x 3 mm
- 1 blank Drufosoft® colour 120 x 3 mm

Dreve Elite

is a mouthguard made of three Drufosoft® blanks. Recommended for boxing, martial arts and water polo. It is manufactured from:

- 2 blanks Drufosoft® transparent 120 x 3 mm
- 1 blank Drufosoft® colour 120 x 3 mm

Dreve Professional

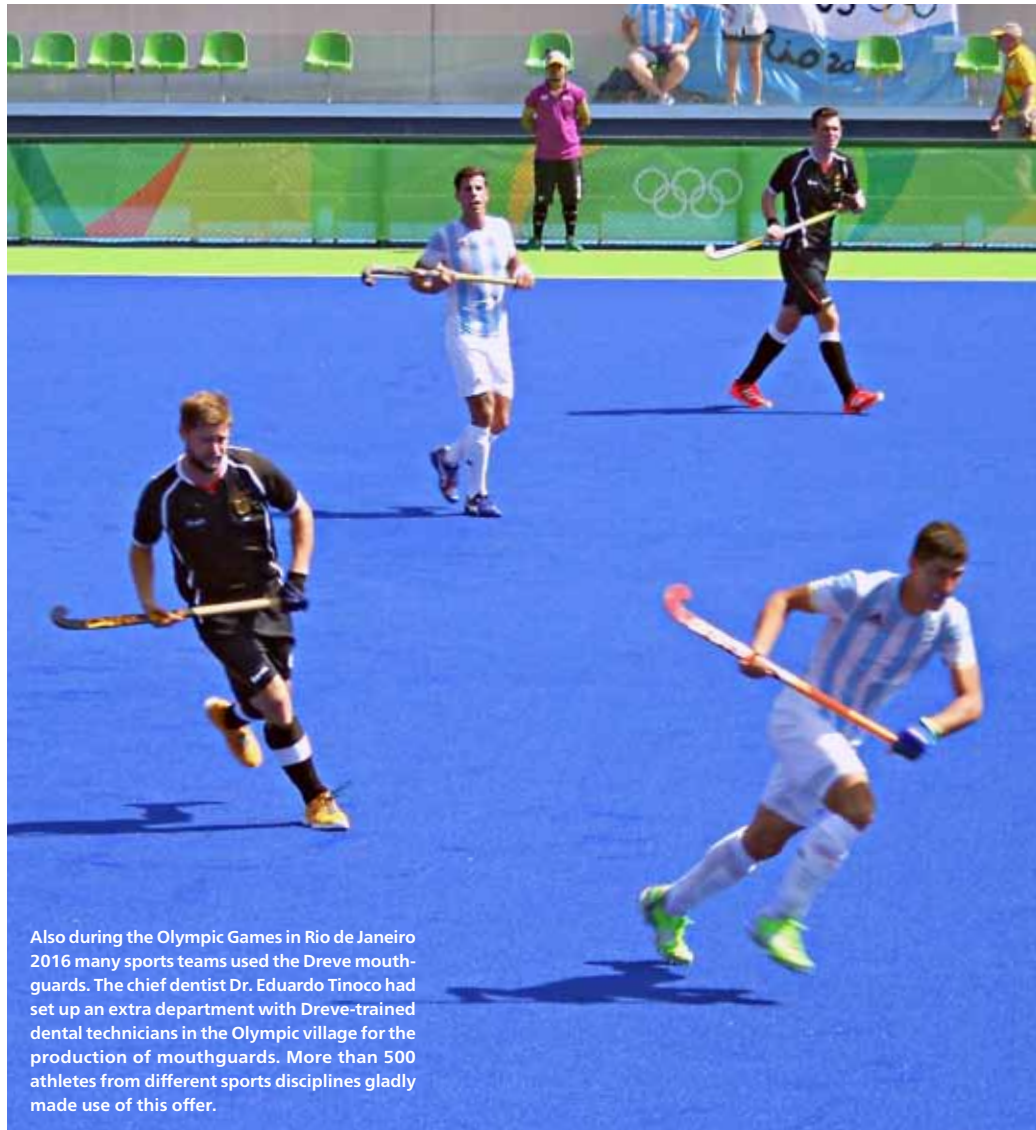
is a mouthguard made of two Drufosoft® and one Biolon blank. Recommended for professional athletes, so-called stick sports, e. g. hockey, ice hockey, polo. It is manufactured from:

- 1 blank Drufosoft® transparent 120 x 3 mm
- 1 blank Biolon transparent 120 x 2 mm
- 1 blank Drufosoft® colour 120 x 3 mm

Dreve Mouthgard

The Dreve Mouthguard system has been well-proven for many years and belongs to the sports equipment of many international athletes as well as amateur sportsmen. The laboratory made mouthguard shows perfect fit without influencing speech, breathing or swallowing.

During processing it can also be adapted individually by using different materials and thicknesses according to the protection needs of the corresponding kind of sport. Further characteristics of the certified sports mouthguards are the x-ray opaque stripe as well as the two Dreve labels.



Also during the Olympic Games in Rio de Janeiro 2016 many sports teams used the Dreve mouthguards. The chief dentist Dr. Eduardo Tinoco had set up an extra department with Dreve-trained dental technicians in the Olympic village for the production of mouthguards. More than 500 athletes from different sports disciplines gladly made use of this offer.



Drufosoft®

Thermoforming blank made of ethyl vinyl acetate for the production of:

- sports mouthguards
- positioners
- medical splints
- duplication forms

Characteristics

- soft-elastic, 82 Shore A
- high recovery from deformation
- can be laminated

Drufosoft®		transparent, Ø 120 mm
1 mm	20 pieces	D4245
1 mm	50 pieces	D42451
1.5 mm	20 pieces	D4252
1.5 mm	50 pieces	D42531
2 mm	15 pieces	D4250
2 mm	50 pieces	D42511
3 mm	10 pieces	D4248
3 mm	30 pieces	D42481
4 mm	15 pieces	D42472
4 mm	75 pieces	D424901
5 mm	15 pieces	D4225

Example of use
Drufosoft® colour



Example of use
Drufosoft® bicolour



Example of use
Drufosoft® tricolour



Drufosoft® colour

		▼ 3 pieces	▼ 10 pieces
3 mm	neon-red	D42483X2	D4248X2
3 mm	neon-green	D42483X3	D4248X3
3 mm	neon-yellow	D42483X4	D4248X4
3 mm	blue	D42483X5	D4248X5
3 mm	yellow	D42483X6	D4248X6
3 mm	black	D42483X7	D4248X7
3 mm	white	D42483X8	D4248X8
3 mm	pink	D42483X9	D4248X9
3 mm	red	D42483X17	D4248X17
3 mm	turquoise	D42483X18	D4248X18
3 mm	gold	D42483X19	D4248X19
3 mm	silver	D42483X20	D4248X20
3 mm	blue-opaque	D42483X21	D4248X21
3 mm	green	D42483X22	D4248X22
3 mm	lilac	D42483X23	D4248X23
3 mm	light blue	D42483X24	D4248X24
3 mm	bordeaux	D42483X25	D4248X25
3 mm	orange	D42483X26	D4248X26

4 mm on request

Drufosoft® bicolour

		Only available in Ø 120 mm	
3 mm	yellow/black/yellow	3 pieces	D4270X11
3 mm	white/blue/white	3 pieces	D4270X12
3 mm	red/blue/red	3 pieces	D4270X13

Drufosoft® tricolour

		Only available in Ø 120 mm	
3 mm	black/red/yellow	3 pieces	D4275X14
3 mm	blue/white/red	3 pieces	D4275X15
3 mm	red/green/blue	3 pieces	D4275X16

Thermoforming Technique

Drufosoft® colourmix Colours and colour combinations

single-coloured

transparent
neon-red
neon-green
neon-yellow

blue
yellow
orange

black
white
pink

red
turquoise
gold

silver
blue-opaque
green

lilac
light blue
bordeaux

bicolour

yellow/black/yellow
white/blue/white
red/blue/red

tricolour

black/red/yellow
blue/white/red
red/green/blue

Drufosoft® colourmix

Package with one blank of every colour and colour combination.

Drufosoft® colourmix

3 mm

25 pieces

Ø 120 mm

D4265



Example of use
X-ray opaque stripes

X-ray opaque stripes

For insertion into Dreve Mouthguards.

X-ray opaque stripes

15 pieces

D4445



Example of use
Dreve Label

Dreve Label

For insertion into Dreve Mouthguards.

Dreve Label

1 sheet/60 pieces

D44500

Dreve Mouthguard Box

For the hygienic storage of mouthguards. Incl. address stickers and sticker with maintenance advice.

Dreve Mouthguard Box

5 pieces, red

D4444



Example of use
Dreve Mouthguard Box

Drufosoft® Primer

Bonding for the durable connection of a hard Biolon blank and a soft Drufosoft® thermoforming blank. Especially suited for the individual manufacturing of soft-hard occlusion splints or for the production of orthodontic devices.

Drufosoft® Primer

10 ml bottle

D4442



Example of use
Drufosoft® Primer

Cutters

Carbide cutter for separating and cutting resp. working on all hard thermoforming materials.

Cutters

- Square cutter without toothing **D4374V**
- Piercing cutter with spiral cut **D4374S**



Foil scissors

Stable special scissors for use in the thermoforming technique, with ridged and bent cut.

- Foil scissors **D4369**



Isolat Film

Heat-resistant film forming insulating agent with excellent separation effect on the basis of alginate for smooth and pore-free surfaces.

Suitable for insulation

- resin/plaster
- plaster/plaster
- silicone/plaster

Isolat Film

- 1 l bottle **D4304**
- 5 l canister **D4303N**

TrayFix

Bonding material for solid connection of thermoformed Drufoplast base and tray handle.

TrayFix

- 20 ml bottle **D4276**



Example of use
TrayFix

MaxiFresh™

The MaxiFresh™ cleaning tablet is used for the outer cleaning and care of dental splints and sports mouthguards. Daily cleaning will prolong the durability of your high-quality dental splint and safeguard an impeccable hygiene and function.

Advantages

- Simple and professional cleaning for daily use at home
- Minimizes decolouration and staining
- Contrary to conventional toothpaste MaxiFresh™ does not contain any abrasives and thus provides for excellent cleaning and material care.

MaxiFresh™

- 24 cleaning tablets incl. bowl **D4100**
- 24 cleaning tablets Refill Set **D4101**



Example of use
MaxiFresh™



PRODUCT VIDEO

www.dreve.com



Thermoforming Technique

*images enlarged



Granules

Round granules containing lead for the embedding of unneeded parts of the model during thermoforming. Recommended for use in pressure units (e. g. Drufoformat and Drufosmart).

Granules

1.2 kg bottle

D4282



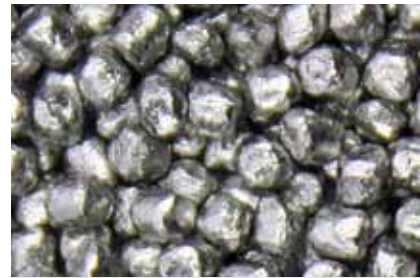
Steel granules

Lead-free granules for the embedding of model parts that are not needed for thermoforming. Recommended for use in Vacformat units.

Steel granules

1.2 kg bottle

D4283



Refined steel granules

The new filling granules with rounded edges minimise the formation of holes, especially in case of thin thermoforming blanks and therefore lead to an optimal fitting. Furthermore the granules can be easily removed from the blanks after the thermoforming process.

Refined steel granules

1.2 kg bottle

D4284



Fillin

Reusable block-out material on silicone basis, for covering undercut areas on the model.

Fillin

60 g bar, natural coloured

D42541



Finishing Liquid

Polishing liquid for the smoothing of rough surfaces of EVA materials (e. g. Drufosoft®).

Finishing Liquid

250 ml bottle

D4466N

Silicone Grease

Special grease for rubber seals (e. g. the o-ring seal of thermoforming units or pressure pots).

Silicone Grease

35 g tube

D3350

Pressure Polymerisation Insert

This insert allows an extra use of Drufoformat units as pressure pot for cast flasks (without water), for repairs or extensions of dentures (with tempered water). The pressure polymerisation insert is to be placed onto the base plate of the Drufoformat. The desired pressure can be adjusted individually by use of the pressure reducing valve.

Pressure Polymerisation Insert

D3227



Pressure Insert

This insert allows an extra use of Drufoformat units as flask press for 1–2 standard brass flasks. The pressure insert is to be fixed into the pressure piston of the Drufoformat. The pressure can be adjusted individually from 2 to 6 bar by use of the pressure reducing valve.

Pressure Insert

D3211



K7 Insert

The porous metal disc with pre-cut holes is suitable for up to seven prepared plaster dies for the production of thermoformed resin caps. The K7 insert is to be placed into the forming table insert of the Drufoformat instead of the nub plate. This insert enables the additional use of Drufoformat units to produce thermoformed resin caps.

K7 Insert

D3228



Funky tool

Funky tool is an accessory unit for Drufoformat and Drufosmart thermoforming units for an individual colour design of Drufosoft® blanks.

Funky tool

D3229



► Example of use Funky tool



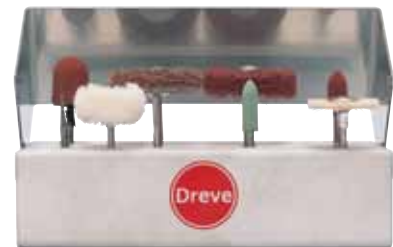
Thermoforming Technique

Workout set thermoforming technique

Set of grinding tools for the workout and finishing of all thermoformed parts, assorted in a robust and practical table stand, made of V2A.

Contents

- 1 square cutter
- 1 special cutter
- 2 mandrels incl. support discs
- 1 UltraTrimm medium grinding wheel
- 1 UltraTrimm light polishing wheel
- 1 grinding cap holder, round, size 2, incl. grinding cap
- 1 grinding cap holder, pointed, size 1, incl. grinding cap
- 1 hard rubber, flame shaped
- 1 brush made of goat hair
- 1 cotton buff
- 1 table stand made of V2A



Workout set thermoforming technique

D3273

Sample assortment thermoforming blanks

Practical sample assortment of Dreve thermoforming materials, including all necessary information regarding materials, thicknesses, accessories packed in a handy collection case.



Sample assortment thermoforming blanks

D3272

Isopor rubber

Space maintainer discs made of foamed material which are placed between model and Drufoplast, when manufacturing thermoformed impression trays. On the inside of the impression tray a rough-textured surface is created, which offers an excellent mechanical retention between impression silicone and custom-made tray.

Isopor rubber

100 x 3 mm	10 pieces	D4256
100 x 6 mm	10 pieces	D4257



► Example of use Isopor rubber





Castdon System

The denture pouring technique with Castdon resins and the special pouring flasks is a time-saving, economical procedure for today's price and quality conscious dental technician.

All components of the system are coordinated with each other, the handling of this technique is easy and the results convince in regard to function, aesthetics and exact fitting.

Complicated grinding work is not necessary, as no bite increase occurs. After an accurate wax modelling the denture can be taken out of the form and is nearly finished, apart from a slight post processing that is reduced to a minimum.

Resin pouring technique

Polymax

Solid pressure polymerisation units for cold and hot polymerisation.

Advantages

- continuously adjustable temperature for hot and cold polymerisates
- 90 minutes timer
- variably adjustable air pressure up to max. 5 bar (Polymax 5 up to max. 6 bar)
- automatic safety-sealing-system
- control by digital indication of time and temperature, pressure by manometer
- pressure pot made of special coated aluminium
- external housing made of hard-wearing PU
- housing cover made of stainless steel
- maintenance-free technique
- water drain valve
- when heating is switched off, unit is suitable for compression



PRODUCT
VIDEO

www.dreve.com

Polymax 1

Pressure polymerisation unit with a temperature of 95 °C for 1 brass flask including clamp resp. 2 Castdon flasks.

Inclusive

- Pressure hose and water drain hose

Technical Data

Dimensions (H x W x D)	225 x 295 x 315 mm
Pressure pot	Ø 160 mm
Pressure pot depth	110 mm
Weight	10.2 kg
Power consumption	450 W at 115/230 V
Pressure min/max	3/5 bar
Temperature range	up to 95 °C

Polymax 1

Special voltage available on request

95 °C, red	230 V / 50/60 Hz	D3429
95 °C, red	115 V / 50/60 Hz	D3429XA
95 °C, silver	230 V / 50/60 Hz	D34291
95 °C, silver	115 V / 50/60 Hz	D34291XA

Polymax 1 (120 °C)

Identically constructed unit like the Polymax 1, however, with a temperature range up to 120 °C and a minimum-/maximum pressure of 3/4.2 bar.

Inclusive

- Pressure hose and water drain hose

Polymax 1 (120 °C)

Special voltage available on request

120 °C, red	230 V / 50/60 Hz	D3428
120 °C, red	115 V / 50/60 Hz	D3428XA
120 °C, silver	230 V / 50/60 Hz	D34281
120 °C, silver	115 V / 50/60 Hz	D34281XA



Polymax 3

Pressure polymerisation unit with a temperature range of up to 95 °C, for 3 brass flasks including clamp resp. 6 Castdon flasks.

Inclusive

- Pressure hose and water drain hose

Technical Data

Dimensions (H x W x D)	440 x 295 x 315 mm
Pressure pot	Ø 160 mm
Pressure pot depth	300 mm
Weight	15.1 kg
Power consumption	900 W at 115/230 V
Pressure min/max	3/5 bar
Temperature range	up to 95 °C

Polymax 3

Special voltage available on request

red	230 V / 50/60 Hz	D3422
red	115 V / 50/60 Hz	D3422XA
silver	230 V / 50/60 Hz	D34221
silver	115 V / 50/60 Hz	D34221XA



Polymax 5

Pressure polymerisation unit with a temperature range of up to 95 °C, with infinitely variable pressure from 3 to 6 bar. Due to a particularly large pressure pot volume also suitable for large articulators, 3 brass flasks including clamp resp. 4 Castdon flasks.

Advantages

- especially large pressure pot volume suitable for large articulators
- continuously adjustable pressure of 3 to 6 bar

Inclusive

- Pressure hose and water drain hose

Technical Data

Dimensions (H x W x D)	310 x 345 x 385 mm
Pressure pot	Ø 220 mm
Pressure pot depth	174 mm
Weight	16.9 kg
Power consumption	900 W at 115/230 V
Pressure min/max	3/6 bar
Temperature range	up to 95 °C

Polymax 5

Special voltage available on request

red	230 V / 50/60 Hz	D3423
red	115 V / 50/60 Hz	D3423XA
silver	230 V / 50/60 Hz	D34231
silver	115 V / 50/60 Hz	D34231XA



Resin pouring technique

Labormat SD

Large, solid boiling-out unit for up to 12 flasks.
Also suitable for polymerisation of denture resins.

Advantages

- high-grade steel housing
- continuously adjustable temperature from 0–95 °C
- individual spraying-time adjustment with a 6 minute timer
- 24-h timer
- hand spray gun included
- practical sliding lid
- instantaneous button for short boiling-out
- optionally installable or movable on castors

Inclusive

- water run-off/supply hose
- cleaning brush
- castors
- flask supporting plates
- collecting tank for waste water

Optionally available

- flask baskets for 3 flasks (see right page)

Labormat SD
230 V / 50 Hz

Special voltage available on request
D3601

Technical Data

Dimensions (H x W x D)	940 x 635 x 660 mm
Weight	75.0 kg
Power consumption	3.1 KW
Water filling	50 l
Temperature range	0–95 °C



Labormat TH

Compact boiling-out unit for up to 6 flasks. Also suitable for polymerisation of denture resins.

Advantages

- high-grade steel housing
- continuously adjustable temperature from 0–95 °C
- individual spraying-time adjustment with a 6 minute timer
- hand spray gun included
- practical hinged lid
- instantaneous button for short boiling-out

Inclusive

- cleaning brush
- flask supporting plates

Optionally available

- flask baskets for 3 flasks (see right page)

Labormat TH
230 V / 50 Hz

Special voltage available on request
D3603N

Technical Data

Dimensions (H x W x D)	500 x 570 x 400 mm
Weight	38.0 kg
Power consumption	3.2 KW
Water filling	15 l
Temperature range	0–95 °C





Filter mats

For collecting wax residues, plaster residues etc. when boiling-out in Labormat units.

- 2 Filter mats/Labormat SD
- 1 Filter mat/Labormat TH

Filter mats

18 x 60 cm, 10 pieces **D36018**

Flask basket for Labormat units

Made of V2A, with plastic handle for 3 flasks.

- 4 flask baskets fit into the Labormat SD
- 2 flask baskets fit into the Labormat TH

Flask basket

D3604



Base

With castors for Labormat TH.
Dimensions: H 435 x W 590 x D 370 mm
Special dimensions on request.

Base

D3607



Unisol E

Effective descaler used for the care of strongly used wax boiling-out units (e. g. Labormat).

Unisol E

2.5 kg tub

D4383



Unisol W

Concentrated wax-solving additive for a quicker and more intense cleaning of models in wax boiling-out units (e. g. Labormat).

Unisol W

2 x 1 l bottle

D4392

5 l canister

D4393

Resin pouring technique

Castdon Resin

Auto-polymerising, cadmium-free PMMA pouring resin with barbiturate hardener system for the production of total and partial dentures, clinically proven for many years.

Characteristics

- low shrinkage
- excellent flow characteristics
- break-resistant
- colour stable
- minimum content of residual monomer
- also suitable for the pressing procedure, relining and repairs
- successfully tested for biocompatibility

Areas of indication

- total prosthodontics
- partial prosthodontics
- implant prosthodontics
- immediate prosthodontics
- relinings
- repairing
- completion

Components

Polymer

- polymethyl methacrylate copolymer
- barbiturate acid derivates
- colour pigments

Monomer

- methyl methacrylate
- quaternary sal ammoniac
- stabilisers
- catalyst
- vulcaniser

Tabular basic data

- max. dorsal height of model 20 mm
- amount of material Siliform 2 x 150 ml
- curing Siliform 30 min.
- curing Gelon 45 min.
- amount of material required for each denture: 17 g Polymer, 11 ml Monomer
- polymerisation time: resin 25 min., polymerisation temperature 45 °C, pressure range 2.5–5.0 bar
- approx. 30 minutes pure working time



- manufacture wax model as usual
- functional edges must be free of wax
- adjust model in flask



- fix model onto bottom plate by use of wax
- close flask with brackets
- check sealing for correct fit



- shake Siliform before use
- take 150 ml of each component and mix homogeneously by use of spatula



- fill flask from top in a thin stream



- cure silicone under the same pressure as will be done later with the resin (e. g. Polymax)
- curing approx. 30 min.



- remove bottom plate and deflask the model



- pierce two pouring canals into the dorsal area of the jaw ridge
- one additional canal has to be pierced into the upper jaw, in central position



- remove wax from teeth using the flask bottom plate
- abrade teeth and apply retention
- set teeth back into the duplication form
- no gluing of teeth is necessary due to the moist surface of the silicone



- application of Castdon Bonding between tooth and basis strengthens connection



- put model into warm water, afterwards dry the surface
- insulate by use of Isolat Film
- only insulate with one layer!



- set model back into duplication form
- close flask with bottom plate
- fill dosing aids (the same filling height guarantees an optimal mixing ratio, 17 g powder/11 ml liquid for one denture)



- mix Castdon homogeneously in a mixing beaker
- pour it into the flask in a thin stream through only one canal



- cure inside a polymerisation unit (e. g. Polymax 1) for about 25 min. at a temperature of 45 °C
- fill with water up to the edge of the flask
- the resin-filled funnels should not be set under water



- remove the bottom plate after polymerisation
- deflask the model



- denture can be removed easily from the model



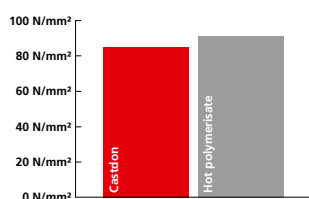
- further treatments are reduced to: removing of spill-overs, adding of the finishing touches by use of sandpaper



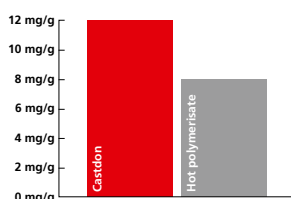
... and polishing – completed!

► Technical Information

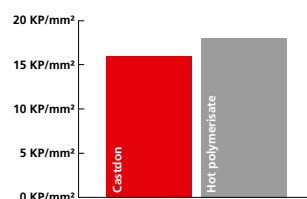
Bending strength



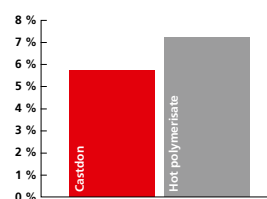
Residual monomer after 48 h at 37 °C



Hardness



Shrinkage



Resin pouring technique

Castdon Starter Kit

Comprehensive complete starter package in two colour versions with all necessary components for beginners.

Contents

- Castdon flask, transparent
- Castdon Monomer, 0.5 l bottle
- Castdon Bonding, 20 ml bottle
- Siliform, 2 x 850 ml (1 kg) bottles
- Isolat Film, 1000 ml bottle
- 1 canal piercing instrument, Ø 8 mm
- dosing aids
- Castdon Polymer, 0.75 kg

Castdon Starter Kit

pink-transparent

D3790

pink-opaque

D3792

► Case Studies





Castdon Monomer

Mixing liquid for Castdon and DentureArt resins.

Castdon Monomer

150 ml bottle	D3905
0.5 l bottle	D3865
1 l bottle	D3867



Castdon Bonding

Liquid for the perfect bonding between highly vulcanised denture teeth and auto polymer resins.

Castdon Bonding

20 ml bottle	D3877
--------------	--------------



Castdon flask

Professional pouring flask with transparent upper part, stainless steel bottom plate with integrated chambers for teeth dewaxing, incl. canal piercing instrument, Ø 8 mm.

Castdon flask

transparent	D3803
-------------	--------------



Castdon dosing aids

Measuring cups for a perfect mixing ratio of 2:1 for all types of Castdon resins.

Castdon dosing aids

2 pieces	D38092
----------	---------------



Castdon Polymer

Castdon Polymer

pink-transparent	0.75 kg tub	D3873
pink-transparent	1.2 kg tub	D3874
pink-transparent	4.0 kg bucket	D3876
pink-opaque	0.75 kg tub	D3884
pink-opaque	1.2 kg tub	D3887
transparent	0.75 kg tub	D3879

Resin pouring technique

Canal piercing instrument

Canal piercing instrument

Ø 8 mm, 1 piece

D3872



Siliform

Addition-curing, thin-flowing form silicone for embedding dentures in the resin pouring technique. Thanks to special contents Siliform has a unique material surface and guarantees an easy deflasking of the finished denture.

Characteristics

- excellent reproduction of details
- almost no shrinkage, therefore perfect reproduction of the wax set-up
- slightly oily surface film, therefore excellent flow characteristic of the pouring resin
- final hardness 14 Shore A
- component A = white, B = yellow

Siliform

2 x 850 ml bottles A+B **D38605**



Isolat Film

Heat-resistant, film-forming insulating agent on the basis of alginate for smooth surfaces free of pores with excellent separating effect.

Suitable for the insulation

- resin/plaster
- plaster/plaster
- silicone/plaster

Isolat Film

1 l bottle

D4304

5 l canister

D4303N



Gelon

High quality duplicating gel on the basis of Agar-Agar.

Characteristics

- especially hard and stable in form
- low shrinkage
- short curing times
- suitable for model casting and denture pouring technique

Gelon

green 6 kg bucket **D38602**

transparent 6 kg bucket **D38601**



DentureArt

A further development of the Castdon pouring system. DentureArt is based on a highly opaque basis resin and different intensive colours that harmonise with each other for the creative reproduction of a lifelike gingiva. This product offers the user unlimited possibilities in order to meet all state of the art aesthetical demands. DentureArt materials can perfectly be integrated into the mouth. A reliable cover of the cervix dentis and constructive parts is achieved. For the development of this system the famous master dental technician Jan Schünemann was exclusively at our disposal for advice. His name stands for the inno-vative character of the DentureArt product line.

Characteristics

- highly opaque basis resin
- different colours for the individual characterisation
- intensive colours that harmonise with each other
- absolutely stable in colour
- low polymerisation shrinkage
- low costs of investment

DentureArt System Pack

Complete basic assortment with all necessary components and comprehensive accessories for beginners. The assortment is supplied in a solid portable case. With Castdon Base a production of about 10 DentureArt dentures is possible.

Contents

- Castdon Base Polymer
natural opaque, 190 g tub
- Castdon Color powder
margin white, gingiva red and vein blue, each in 35 g tub
- Castdon Intense powder
red, white, yellow and brown, each in 8 g tub
- Castdon Color Monomer modelling liquid
50 ml bottle
- Castdon Monomer
150 ml bottle
- Veins viscose fibres
blue and dark red, each in 7 ml bottle
- Castdon dosing aids
- Brushes
- Mixing spatula
- Graduated beaker
- illustrated colour booklet with detailed application examples

DentureArt System Pack

D3900

Castdon Base Polymer

Highly opaque denture resin.

Castdon Base Polymer

natural opaque	190 g	bottle	D3901
natural opaque	0.75 kg	tub	D3902
natural opaque	1.2 kg	tub	D3903



Resin pouring technique

Castdon Color

Enables the lifelike reproduction of different gingiva colours:

- gingiva red for the coloured design of soft gingiva parts
- margin white for the realisation of a tight and healthy gingiva at the cervix dentis
- vein blue for the characterisation of blue gingiva parts

Castdon Color

gingiva red	35 g	bottle	D3902X1
margin white	35 g	bottle	D3902X2
vein blue	35 g	bottle	D3902X3



Castdon Monomer

Mixing liquid for Castdon and DentureArt resins.

Castdon Monomer

150 ml bottle	D3905
0.5 l bottle	D3865
1 l bottle	D3867



Castdon Intense

Offers options of individualisation. Four intensive colours permit all possibilities to reproduce lifelike gingiva.

Castdon Intense

red	8 g	bottle	D3903X1
white	8 g	bottle	D3903X2
yellow	8 g	bottle	D3903X3
brown	8 g	bottle	D3903X4



Veins

Viscose fibres to be mixed into resins for the individual design of a veined appearance.

Veins

dark red	7 ml	bottle	D3904X1
blue	7 ml	bottle	D3904X2



Castdon Color Monomer

Modelling liquid to mix Castdon Color and -Intense Powder.

Castdon Color Monomer

50 ml bottle	D3906
--------------	-------



Lightpaint On by Klaus Mütterthies

Light-curing colours for the authentic and individual surface characterisation of resins. The set contains 9 original Mütterthies ceramic colours and 3 gingiva colours to paint gingiva parts. All colours can be mixed with each other with unlimited scope for designs. The dual curing system of auto-polymerisation (by mixing colour powder with liquid) and light polymerisation (at a wave length of 300–500 nm) guarantees a long processing time and assures the curing of very opaque colour mixtures. The complete set is supplied in a high-quality mahogany coloured wooden case.

For the individualisation of

- veneers in the C&B technique
- denture parts in the partial and complete prosthodontics
- standard resin teeth
- high-quality and natural-looking long-term temporaries

Contents

- 12 tubs with 2 g colour powder each, one tub per colour

white	orange	black	vanilla
dark orange	bordeaux	khaki	chestnut
pink	maize	pigeon blue	violet
- 4 brushes in different sizes
- 20 ml bottle Liquid (mixing liquid)
- 20 ml bottle Surface (surface sealing)
- 50 ml bottle Cleaner (brush cleaner)
- mixing palette
- thumb palette



Lightpaint On Set

D38236

Lightpaint On colour powder

Ceramic and gingiva colours to characterise resin.

Lightpaint On colour powder

2 g tub

white	D38237X1
vanilla	D38237X2
khaki	D38237X3
maize	D38237X4
orange	D38237X5
dark orange	D38237X6
chestnut	D38237X7
pigeon blue	D38237X8
black	D38237X9
bordeaux	D38237X10
pink	D38237X11
violet	D38237X12



Resin pouring technique

Liquid

By varying the mixing ratio the colour intensity can vary from watery transparent to opaque.
Polymerisation time 3–5 minutes.

Liquid

20 ml bottle

D38238



Cleaner

Special cleaning liquid for brushes.

Cleaner

50 ml bottle

D38240



Surface

Surface sealing for Lightpaint On characterisations. The sealing with Surface provides a smooth and homogeneous surface and increases the durability of the colouring inside the mouth.
Polymerisation time 3–5 minutes.

Surface

20 ml bottle

D38239



Mixing palette

With lid and insert to mix Lightpaint On colour powders with Liquid.
The mixing palette is impervious to light.

Mixing palette

D38243



► Example of use Lightpaint On





Laboratory Accessories

A traditionally innovative programme of market-driven laboratory products is the basis of our company history. Today trained project teams develop complete product systems in our most modern laboratories, which suit perfectly to the daily lab work.

We focus on continuous quality, customer orientation and an optimal price/performance ratio. In the course of many years we therefore have become competent specialists and are your partner in regards to thermoforming technique, denture pouring technique, dental silicones and reliable lab units.

Of course, we offer you a comprehensive service, which always guarantees you a safe usage of our products.

Please inform yourself on the Internet at www.dreve.com about the current course programmes and workshops relating to our product range. Innovation aus Tradition!

Laboratory Accessories

EyeEvolution®

The EyeEvolution® light polymerisation unit bases upon the latest developments in the field of LED technique. It distinguishes through its simple and intuitive handling, and due to its compact dimensions it is most suitable also for individual work stations.

Most modern LED components generate exact wavelengths with extremely high light performances, thus providing for an optimum polymerisation with shortened curing times and minimum thermal strain on the material.

Due to an almost unlimited durability of the LEDs the exchange of the light sources during maintenance is made redundant.

Light polymerisation unit for the use with all commercially available **base materials**:

- build-up resins for thermoformed splints
- individual tray materials
- sealing lacquers
- blackout resins

Advantages

- 12 V unit
- reflective 360° rotary table avoids formation of shades
- LED wave lengths: 2 x 385 nm and 2 x 465 nm
- most easy handling with electronic timer

Technical Data

Dimensions (H x W x D)	205 x 205 x 255 mm
Weight	1.5 kg
Power supply	100–240 V/50–60Hz, 0.7 A
Input power	max. 18 W
Polymerisation peaks	385–390 + 465–470 nm
Programmable time periods	1/ 2/ 3/ 5/ 10 min.

EyeEvolution®

D38100



► Example of use EyeEvolution®



MultiSpot®

Thanks to DWL technology MultiSpot® is the first manual polymerisation unit for the dental lab, appropriate for the whole scope of light-curing materials.

This handy and wireless appliance enables the technician to effortlessly pre-polymerise and fix all light-curing materials.

Due to simultaneous use of UV and blue light LEDs the MultiSpot® represents the perfect supplement for the EyeEvolution® light polymerisation unit.

Appropriate for

- composites
- splint technique
- repairs (e. g. orthodontics)
- light-curing adhesives/ bondings
- sealing lacquers
- blockout resins

Advantages

- LED-technique
- 3.7 V – rechargeable Li-ion battery (customary)
- incl. recharger
- automatic timing device: 20 sec.
- visor ring
- integrated performance control

Technical Data

Dimensions	140 x 30 mm
Weight incl. battery	0.14 kg
Rechargeable battery	3.7 V / 3100 mAh
Operating voltage	
recharger	100–240 V
Input power recharger	2.73 W
Polymerisation peaks	385–390 + 465–470 nm
Timing cycle	20 sec.



MultiSpot®

D38110

Optionally available

MultiSpot® visor rings

3 pcs.

D38111

MultiSpot® Li-ion rechargeable battery

1 pc.

D38112

Recharger

D38113

NanoVarnish

Light-curing one-component lacquer on the basis of especially structured nano-particles.

Characteristics

- ideally low surface energy minimises the sticking of germs
- very thin layers thanks to optimum flowing characteristics
- extremely firm bonding with the basis resin
- very transparent
- easy processing
- curing in all current dental light polymerisation units in the spectral area of 350–500 nm



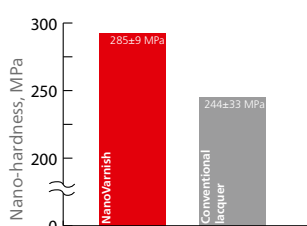
NanoVarnish

20 ml bottle with drop measurer incl. 10 MicroBrush

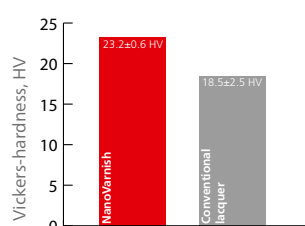
D38900

► Comparison of the features of NanoVarnish with conventional lacquer systems

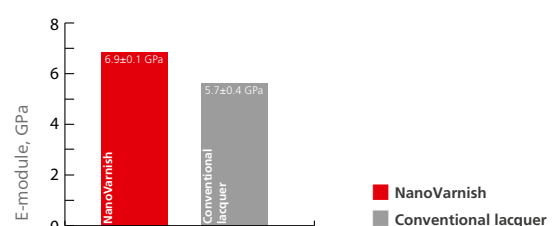
Nano-hardness



Vickers-hardness



Bulk modulus of nano-elasticity



Laboratory Accessories

Plaquit

Light-curing one-component lacquer for coating e. g. built up splints.
Polymerisation time 3–5 minutes.

Plaquit

20 ml bottle with brush insert

D38124

50 ml bottle with brush insert

D38123



Lightplast base plates

Pre-formed, light-curing upper jaw (UJ) resin base plates. Polymerisation in all standard laboratory light units with a spectral range of 300–500 nm.
Polymerisation time 3–5 minutes.

Characteristics

- stable and break-resistant
- very low stickiness
- very long processing time, low material loss
- neutral odour and low shrinkage

For the production of

- custom-made impression trays
- bite patterns
- resin bases for the tooth set-up for complete dentures
- individual incisal guidance plates
- centric bite plates

Lightplast lacquer

Light-curing 1-component lacquer for the surface coating of light-curing tray plates. Lightplast lacquer creates a very smooth surface without pores. It polymerises in each usual laboratory light unit with a spectral range of 300–500 nm.
Polymerisation time 3–5 minutes.

Lightplast lacquer

D38131

50 ml bottle
with brush insert

Lightplast base plates

pink 50 pieces UJ

D38135R

natural 50 pieces UJ

D38135N



► Example of use Lightplast



Lightdon Splint

Light-curing system for a quick and problem-free buildup of thermoformed occlusion splints. The starter kit contains a kneadable 1-component resin, bonding liquid and sealing lacquer. Lightdon Splint permanently compounds with thermoforming materials which are suitable for a set-up (e. g. Biolon). Easy and material-saving handling. Very economic in the splint therapy. It polymerises in each standard laboratory light unit with a spectral range of 300–500 nm. Polymerisation time 4–5 minutes.

Lightdon Splint Starter Kit

D3814

Contents:

- 60 ml Lightdon Splint resin
- 10 ml Bonding
- 10 ml Plaquit sealing lacquer

Lightdon Splint resin

Light-curing, kneadable 1-component resin for building up thermoformed splints. Polymerisation time 4–5 minutes.



Lightdon Splint resin

 120 ml tub **D38141**

Lightdon Bonding

Light-curing bonding liquid for the safe compound of Lightdon Splint resin with a thermoformed splint that is suitable for build-up (e. g. Biolon). Polymerisation time 30–60 seconds.



Lightdon Bonding

 10 ml bottle **D38223B**


Cenit L

Light-curing PMMA resin with best viscosity for application in the laboratory. It polymerises in each standard laboratory light unit with a spectral range of 300–500 nm. Polymerisation time 3–5 minutes.

Characteristics

- economic and clean working due to delivery in a dosing syringe
- coating thicknesses up to 2 mm are cured within one production step
- exact determination of coating thickness by increasing colour intensity
- colour: light-blue

Application fields

- for the production of space maintainers when producing bleaching splints
- for the production of reservoirs when producing medical splints
- to fill up air bubbles in the working model
- to block out undercuts
- for the mounting of broken teeth

Contents

- 4 application syringes of 2.5 g each
- 8 dosing tips

Cenit L
D3815

Laboratory Accessories

Dosper evo

Automatic mixing and dosing unit for thin-flowing, addition-vulcanising duplication silicones. The working process becomes shorter and safer. Materials reach optimum quality values. The unit is constantly ready for use and very economical, a profitable machine also for the smaller lab.

Advantages

- due to its innovative adjustable flow control it is suitable for all duplication silicones with a mixing ratio 1:1
- unwanted emptying of the reservoirs and mixing-up of components is excluded
- unique lighting of working place reduces formation of shades

Inklusive

- 5 mixing tips
- 2 bottle adaptors

Technical Data

Input power	250 W
Dimensions (H x W x D)	320 x 225 x 370 mm
Weight	12 kg

Dosper evo

red	230V/50/60 Hz	D5050
silver	230V/50/60 Hz	D50501
red	115V/50/60 Hz	D5050A
silver	115V/50/60 Hz	D50501A



PRODUCT VIDEO
www.dreve.com

► Example of use Dosper evo



Material reservoirs for Dosper M3-M5 and Dosper evo

Transparent containers made of stable plastic for duplication silicone.
Equipped with a fast coupling for easy installation.
Filling volume: approx. 1.7 l / reservoir



Material reservoirs

- | | |
|----------------------------|--------------|
| for Dosper evo, 2 pieces | D5022 |
| for Dosper M3-M5, 2 pieces | D5021 |

Connection hoses for Dosper M3-M5 and Dosper evo

For connection between DUBLISIL® canisters and Dosper evo.

Connection hoses for Dosper evo

- | | | |
|-------------------------------|----------------|---------------|
| 2 pieces for 5.1 l canisters | Length: 265 mm | D49366 |
| 2 pieces for 21.2 l canisters | Length: 475 mm | D49367 |

Connection hoses for Dosper M3-M5

- | | | |
|-------------------------------|----------------|---------------|
| 2 pieces for 5.1 l canisters | Length: 265 mm | D49362 |
| 2 pieces for 21.2 l canisters | Length: 475 mm | D49363 |



S-50 Mixing head retro-fitting set for Dosper units

S-50 mixing head with a modified tip reception, complete with screws for easy and quick assembly. Dosper units with a mixing head for 48 ml mixing tips can easily be converted to the new S-50 system with this assembly set. The S-50 mixing head has separated outlets – a mixing of the A and B component when fixing or removing the mixing tip is not possible. A blockage of the mixing head due to cured material is avoided and consequently a trouble-free operation of the unit is granted.



S-50 Mixing head retro-fitting set

- | | |
|---------------------|----------------|
| incl. 5 mixing tips | D50456N |
|---------------------|----------------|

Storage racks for Dosper M3-M5 and Dosper evo

For storage of DUBLISIL® containers above the Dosper.

Storage rack

- | | | |
|-----------------------------|--------------------------|---------------|
| small, for 5.1 l canisters | H 371 x W 295 x D 214 mm | D49364 |
| large, for 21.2 l canisters | H 665 x W 533 x D 322 mm | D49365 |



Laboratory Accessories

Dublisil®

Addition-vulcanising vinyl polysiloxanes for all application fields in dental duplication technique, with final hardness 15/20/30 Shore A. The practical mixing method and the very thin flowing consistency ensure excellent duplicated models down to the very detail. Dublisil® 15/20 are also available as speed versions which allow deflasking after only 10 minutes.

Advantages

- Due to the used platinum hardener the forms are virtually shrinkage-free and show an outstanding storage stability.
- Highest quality standards are achieved by the optimum matching of the materials with the Dosper dosing units.
- Excellent mechanical characteristics provide for a very smooth deflasking. Negative forms can be filled several times without losing any precision. The surface of the duplication model is smooth and hard without additional treatment.

Dublisil® 15 speed

- final hardness 15 Shore A, thin-flowing
- easy to deflask thanks to highly-flexible consistency
- component A = white, B = turquoise

Dublisil® 15 speed

2 x 850 ml	bottles A+B	D4815
2 x 5.1 l	canisters A+B	D4816
2 x 21.2 l	canisters A+B	D4817



Dublisil® 20 speed

- final hardness 20 Shore A, thin-flowing
- medium hardness for stable duplication forms for e. g. attachment and milling techniques
- component A = white, B = blackberry

Dublisil® 20 speed

2 x 850 ml	bottles A+B	D4515
2 x 5.1 l	canisters A+B	D4516
2 x 21.2 l	canisters A+B	D4517



Dublisil® 15

Well-proven standard material for the entire duplication technique.

Characteristics

- final hardness 15 Shore A, thin-flowing
- easy to deflask thanks to highly-flexible consistency
- component A = white, B = green

Dublisil® 15

2 x 850 ml	bottles A+B	D4801
2 x 5.1 l	canisters A+B	D4806
2 x 21.2 l	canisters A+B	D4807





Dublisil® 20

Duplication silicone with medium final hardness for all kinds of duplications.

Characteristics

- final hardness 20 Shore A
- medium hardness for stable duplication forms for e. g. attachment and milling techniques
- component A = white, B = pink

Dublisil® 20

2 x 850 ml	bottles A+B	D4527
2 x 5.1 l	canisters A+B	D4528
2 x 21.2 l	canisters A+B	D4529



Dublisil® 22 plus

Dublisil® 22 plus is an addition-curing duplication silicone with a very good flowability and an excellent detail accuracy. The high-grade mechanical characteristics (tensile strength at break and tear resistance) guarantee problem-free deflasking.

Characteristics

- final hardness 22 Shore A
- medium final hardness for stable duplication forms for e. g. attachment and milling techniques
- component A = white, B = red

Dublisil® 22 plus

2 x 850 ml	bottles A+B	D4533
2 x 5.1 l	canisters A+B	D4531
2 x 21.2 l	canisters A+B	D4532



Dublisil® 30

Duplication silicone with a high final hardness for the duplication technique without flasks.

Characteristics

- final hardness 30 Shore A
- high tensile strength
- complete neutralisation of the expansion pressure of the embedding material also without flask ring
- ideal for highly precise embedding material models for e. g. telescope or attachment works
- component A = white, B = lilac

Dublisil® 30

2 x 850 ml	bottles A+B	D4500
2 x 5.1 l	canisters A+B	D4502
2 x 21.2 l	canisters A+B	D4503

Laboratory Accessories

Dublisil® flask

Height adjustable flask for the economic silicone duplication technique.

Advantages

- economic consumption of silicone thanks to an adjustable interior part and therefore best adjustment to the corresponding model situation
- safe fitting of the negative due to the retention part
- duplication of models with or without base
- anchorage due to conical cuff form
- top, cuff and base part are made of stable and long-lasting Makrolon resin



Height adjustable

Dublisil® flask

with foamed space maintainer

D3805

Foamed space maintainers

for Dublisil® flask. For surrounding the model base in case of an economic duplication.

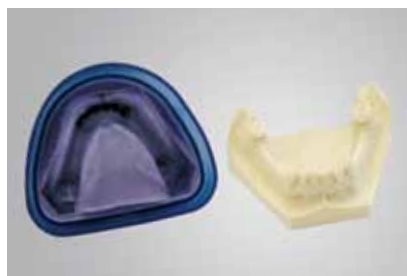
Foamed space maintainers

25 pieces

D38076



► Example of use Dublisil® flask



Laborsil pro

Kneadable laboratory putty with a final hardness of 70 or 90 Shore A made of addition-vulcanising silicone.

Characteristics

- easy and clean mixing in a ratio of 1:1
- smooth, non-sticky initial consistency
- very precise impression and exact reproduction of details
- no shrinkage, therefore stable during storage
- boiling resistant up to > 200 °C



Example of use
Laborsil

Laborsil pro 70

Fields of application

- matrix
- embedding and insulation material for resin teeth in the flask technique
- control key

Technical Data

Mixing time	30 sec.
Processing time	1:15 min.
Removal after	6 min.
Final hardness	70 Shore A

Laborsil pro 70

2 x 450 ml (approx. 2 x 750 g)

D38390

2 x 1.2 l (approx. 2 x 1.9 kg)

D38391

2 x 3.45 l (approx. 2 x 5 kg)

D38392

Laborsil pro 90

This extremely hard kneadable addition-curing putty distinguishes with a new formulation. The single components are now much smoother which makes the material easily kneadable.

Fields of application

- matrix
- embedding and insulation material for resin teeth in the flask technique
- control keys
- bite fixation
- models for repairs or enlargements

Technical Data

Mixing time	30 sec.
Processing time	1:15 min.
Removal after	6 min.
Final hardness	90 Shore A

Laborsil pro 90

2 x 450 ml (approx. 2 x 750 g)

D38393

2 x 1.2 l (approx. 2 x 1.9 kg)

D38394

2 x 3.45 l (approx. 2 x 5 kg)

D38395



Laboratory Accessories

Laborsil

User-friendly, condensation-curing, modelling silicone for universal application in the laboratory. Available in 70 and 90 Shore A for the production of matrix, small repair models, to block out undercuts, etc.

Characteristics

- especially smooth
- non-sticky consistency
- easy and fast mixing
- very precise detail reproduction

Hardener paste

For condensation-vulcanising silicones (e. g. Laborsil).

Hardener paste

- | | | |
|-----|-------------|----------------|
| red | 20 ml tube | D48380R |
| red | 100 ml tube | D48381R |



Laborsil 70

Standard laboratory putty with medium final hardness for the complete dental technique.

- final hardness 70 Shore A
- very precise fitting
- slightly flexible characteristics
- putty = light blue, hardener paste = red

Laborsil 70

- | | |
|---------------------------------|---------------|
| 2 kg tub Putty | D38380 |
| 2 x 20 ml tubes hardener paste | |
| Dosing spoon | |
| 5 kg bucket Putty | D38381 |
| 100 ml tube hardener paste | |
| Dosing spoon | |
| 20 kg bucket Putty | D38382 |
| 4 x 100 ml tubes hardener paste | |
| Dosing spoon | |



Laborsil 90

Laboratory putty with especially high, plaster-like final hardness.

- final hardness 90 Shore A
- very precise fitting
- millable
- putty = dark blue, hardener paste = red

Laborsil 90

- | | |
|---------------------------------|---------------|
| 2 kg tub Putty | D38384 |
| 2 x 20 ml tubes hardener paste | |
| Dosing spoon | |
| 5 kg bucket Putty | D38385 |
| 100 ml tube hardener paste | |
| Dosing spoon | |
| 20 kg bucket Putty | D38386 |
| 4 x 100 ml tubes hardener paste | |
| Dosing spoon | |



Regofix transparent

Application

- matrix material for light-curing composites of anterior and lateral teeth
- for fast and uncomplicated manufacturing of x-ray splints
- ideal for controlled bite registration in difficult cases

Advantages

- easy cutting characteristics
- not opaque to x-rays

Technical Data

Colour	transparent
Final hardness	70 Shore A
Processing time	40 sec. at 23 °C
Removal after	120 sec. at 37 °C
Consistency	medium-type 2
Recovery from deformation	> 99.9 %
Strain in compression	2.5 %
Linear dimensional change	< 0.02 %
Remaining strain in compression	< 0.01 %

Regofix transparent

2 x 50 ml double cartridges incl. 12 mixing tips, green

D504876

8 x 50 ml double cartridges

D504877

► Example of use Regofix transparent



Silfix

Precise embedding material on the basis of addition-curing silicone for the production of complete dentures.

Characteristics

- developed for the denture pressing procedure
- ideal flow characteristics
- final hardness > 70 Shore A
- grants a safe fitting of teeth in the counter part
- available in 50 ml double cartridges or in 200 ml bottles

Silfix

2 x 200 ml dosing bottles with mixing beaker

D4311

4 x 50 ml double cartridges

D504310



Laboratory Accessories

GumQuick

Addition-curing silicone for the production of flexible gingiva masks in two variations. The flowing characteristics of GumQuick ensure exact working with excellent reproduction of details. The set comes with the insulation liquid DuoSep which enables a production of the mask directly in the impression.

Characteristics

- available in two final hardnesses
- colour adapted to natural gingiva
- optimal flowing characteristics
- no shrinkage
- stable during storage
- easy finishing with scalpel or rotating instruments
- easy and safe handling thanks to double cartridge system

GumQuick

Gingiva mask material especially developed for the C&B technique with very good tear-resistance and elongation values.

GumQuick Set

2 x 50 ml double cartridges
12 mixing tips, light blue
10 ml bottle DuoSep

D504842

GumQuick Refill

4 x 50 ml double cartridges

D504888

Technical Data

Processing time	1:30 min.
Removal after	6:30 min.
Final hardness	60 Shore A
Tear-resistance	4.5 MPa
Elongation at break	175 %

► Example of use GumQuick



GumQuick implant

Gingiva mask material especially developed for implant works. High final hardness and low flexibility for safe and exact secondary constructions. The polymerised gingiva mask shows an abrasion-resistant surface.

Technical Data

Processing time	1:30 min.
Removal after	6:30 min.
Final hardness	75 Shore A
Tear-resistance	3.9 MPa
Elongation at break	55 %

GumQuick implant Set

D504892

2 x 50 ml double cartridges
12 mixing tips, light blue
10 ml bottle DuoSep

GumQuick implant Refill

D504898

4 x 50 ml double cartridges



DuoSep

Insulation agent between addition-curing silicone and polyether materials.

DuoSep

10 ml bottle

D4306



Laboratory Accessories

MegaBase®

Permanently soft-remaining relining material on the basis of addition vulcanising polysiloxanes. The auto-polymerising silicone is suitable for the direct (chair-side) and for the indirect production method. The application field comprises e. g. the relief of sore spots, the protective cover after an implant care, the improvement of the suction effect and many more.

Characteristics

- best final hardness of 30 Shore A, extremely tear-resistant
- safe and permanent compound between silicone and acrylate by a highly effective primer
- easy finishing thanks to enclosed grinding tools
- best surfaces due to auto-polymerising sealing lacquer
- supplied in double cartridges

MegaBase® Starter Kit

D5038222

Contents:

- 50 ml double cartridge with silicone
- 50 ml double cartridge MegaBase® 2K Lacquer
- 6 mixing tips, green
- 6 mixing tips, light blue
- 10 ml bottle MegaBase® adhesive
- 3 grinding tools
- Notepad with care instructions for patients

MegaBase® silicone

D5038220NR

2 x 50 ml double cartridges

D5038220NA

MegaBase® adhesive

10 ml bottle



► Example of use MegaBase®



MegaBase® 2K Lacquer

MegaBase® 2K Lacquer is a clear-transparent, solvent-free, light-curing 2-component silicone lacquer. It is suitable for the coating of soft remaining relinings made from addition-curing silicones.

Advantages

- solvent-free
- odourless
- skin-friendly and biocompatible
- The uncomplicated application provides for sealed surfaces, transparent and shiny

MegaBase® 2K Lacquer

2 x 50 ml double cartridges with 12 mixing tips, light blue

D38233

► Example of use MegaBase® 2K Lacquer



QuickSnick – Remover stick

Liquid for the dissolution and removal of soft remaining addition-curing relining silicones (e. g. MegaBase®) of prostheses made from acrylate.

Advantages

- the practical stick is easily applicable
- residue-free removal of the material after short reaction time
- enormously time saving in practical work

QuickSnick

2 x 6 ml sticks in can with screw cap

D50380

► Example of use QuickSnick



Laboratory Accessories



Odontosil

Addition-curing silicone for the production of orthodontic elasto-positioners. The vulcanisation at room temperature permits, besides the indirect flask method, also the direct application with the double cartridge directly onto the set up model.

Characteristics

- easy and user-friendly handling thanks to the double cartridge system
- available in final hardnesses of 50 and 60 Shore A
- with Odontosil positioners slight tooth corrections can be effected without any problems
- best tear-resistance due to highly functional polymers
- clear transparent
- system components are optionally available

Odontosil 50

2 x 50 ml double cartridges incl. 12 mixing tips, green

D5038150

8 x 50 ml double cartridges

D5038229

Odontosil 60

2 x 50 ml double cartridges incl. 12 mixing tips, green

D5038160

8 x 50 ml double cartridges

D5038227

Odontosil 2K lacquer

Odontosil 2K lacquer is a clear-transparent, solvent-free, light-curing 2-component silicone lacquer. It is suitable for the coating of Odontosil positioners and soft remaining relining materials made from addition-curing silicones. The uncomplicated application provides for sealed surfaces, transparent and shiny.

Advantages

- solvent-free
- odourless
- skin-friendly and biocompatible

Odontosil 2K lacquer

2 x 50 ml double cartridges with 12 mixing tips, light blue

D38233

► Example of use Odontosil/Odontosil 2K lacquer





light



medium



heavy

UltraTrimm

Flexible grinding wheels to treat soft materials.

Application field

- EVA thermoforming plates for sports mouthguards (e. g. DrufoSoft®)
- soft-remaining relining silicone (e. g. MegaBase®)
- positioner silicone (e. g. Odontosil)
- alternative to sandpaper for resin prosthodontics
- hard thermoforming blanks
- soft/hard thermoforming blanks (e. g. Kombiplast)

Characteristics

- three different final hardnesses for rough to fine finishing
- max. rotations: 15.000 rpm

UltraTrimm light

D43753

Contents:
12 Grinding wheels
(Ø 28 mm/thickness 7 mm)
4 support discs
1 mandrel

UltraTrimm medium

D43752

Contents:
12 Grinding wheels
(Ø 28 mm/thickness 7 mm)
4 support discs
1 mandrel

UltraTrimm heavy

D43751

Contents:
6 Grinding wheels
(Ø 28 mm/thickness 14 mm)
4 support discs
1 mandrel

UltraTrimm light

D43763

80 Grinding wheels
(Ø 28 mm/thickness 7 mm)

UltraTrimm medium

D43762

80 Grinding wheels
(Ø 28 mm/thickness 7 mm)

UltraTrimm heavy

D43761

40 Grinding wheels
(Ø 28 mm/thickness 14 mm)

Laboratory Accessories

Grinding cap holders/Grinding caps

Rotating instruments for the treatment of all soft-remaining dental materials.

Application field

- EVA thermoforming blanks for sports mouthguards (e. g. DrufoSoft®)
- soft-remaining relining silicone (e. g. MegaBase®)
- Positioner silicone (e. g. Odontosil)

Characteristics

- economic thanks to exchangeable corundum grinding caps
- grain 150 µm
- max. rotations: 20.000 rpm

Grinding cap holders, round

Ø 14 mm Size 3 **D38230T3**
(for Grinding caps item-no. D38230S3)

Ø 9.5 mm Size 2 **D38230T2**
(for Grinding caps item-no. D38230S2)

Ø 6.5 mm Size 1 **D38230T1**
(for Grinding caps item-no. D38230S1)



Grinding cap holders, pointed

Ø 6.5 mm Size 2 **D4459**
(for Grinding caps item-no. D4462)

Ø 4.5 mm Size 1 **D4458**
(for Grinding caps item-no. D4461)



Grinding caps, round, 5 pieces each

Ø 13 mm Size 3 **D38230S3**
(for Grinding cap holders item-no. D38230T3)

Ø 10 mm Size 2 **D38230S2**
(for Grinding cap holders item-no. D38230T2)

Ø 7 mm Size 1 **D38230S1**
(for Grinding cap holders item-no. D38230T1)



Grinding caps, pointed, 5 pieces each

Ø 7 mm Size 2 **D4462**
(for Grinding cap holders item-no. D4459)

Ø 5 mm Size 1 **D4461**
(for Grinding cap holders item-no. D4459)



GipsEx

Chemical plaster solvent for use e. g. in the resin technique. GipsEx is especially effective and consequently time-saving when cleaning resin dentures, mixing beakers etc. Suitable for use in ultra-sonic units.

GipsEx

2 x 1 l bottle **D4395**

5 l canister **D4396**

Modralit® 3K

Model die material on the basis of polyurethane for the production of precise models with absolutely lifelike and stable reproduction of dimensions. Thanks to its edge strength Modralit® 3K is especially suitable for the precious metal and non-precious metal technique and above all for shoulder and partial crown preparations. The Modralit® 3K set is sufficient for approx. 10 complete basing arches.

Characteristics

- pourable and easy-flowing
- accurate reproduction of details
- shrinkage < 0.05 %
- edge strength and abrasion resistant
- absolutely stable dimensions
- after only 1 h it can be cut and ground
- can be coated with standard lacquers
- Separator, a separating agent between Modralit® 3K and polyether impressions is optionally available
- colour: ivory

Contents

- 2 x 100 ml bottles basis
- 100 ml bottle hardener
- 400 g tub filler material
- mixing and dosing aids



Modralit® 3K Set

D3926

Separator

Separating agent

Suitable for the insulation

- Polyether impressions/ polyurethane model materials
- Silicone/Silicone



Separator

50 ml bottle

D4305

► Example of use Modralit® 3K



Due to the high precision, Modralit® was used repeatedly as model material for the "Golden Parallelometer" (das dental labor).

Accessories

DS 50 Injector

Dosing unit for S-50 double cartridges. Available in three versions for double cartridges with mixing ratio 1:1, 4:1 and 10:1.

DS 50 Injector

Mixing ratio 1:1

Mixing ratio 4:1

Mixing ratio 10:1

D5007

D5008

D5011



Tips

For mixing tips for intra-oral application.



Tips

transparent
(e. g. for Dynax® clear) 40 pieces **D49602**

yellow
(e. g. for Dynax® light) 40 pieces **D49604**

Application tips

For mixing tips for intra-oral application.



Application tips

transparent
(e. g. for StoneBite®) 40 pieces **D49603**

Application tips

For dosing syringes for intra-oral application.



Application tips

black, 0.9 mm
(e. g. for Cenit L) 15 pieces **D2308**

Bayonet ring

For 380 ml cartridges.



Bayonet ring

yellow 1 piece **D4980**

Mixing tips



Mixing ratio 1:1
Inner diameter 5.4 mm
Colour transparent

Product
only for Dosper M4

40 pieces **D4960**
100 pieces **D4960X1**



Mixing ratio 1:1
Inner diameter 5.4 mm
Colour pink

Product
Dosper evo/M5
StoneBite®
StoneBite® scan
Silfix

40 pieces **D4970X1**
100 pieces **D49701X1**



Mixing ratio 1:1
Inner diameter 6.5 mm
Colour green

Product
Dynax® clear
Dynax® heavy body
Dynax® mono
Regofix
MegaBase®
Odontosil

40 pieces **D4970X2**
100 pieces **D49701X2**



Mixing ratio 1:1
Inner diameter 3.2 mm
Colour light blue

Product
GumQuick
GumQuick scan
GumQuick implant
MegaBase® 2K Lacquer
Odontosil 2K Lacquer

40 pieces **D4970X3**
100 pieces **D49701X3**



Mixing ratio 4:1 / 10:1
Inner diameter 3.2 mm
Colour light blue

Product
Fixtemp C&B 4:1
Fixtemp C&B 10:1

40 pieces **D4970X4**
100 pieces **D49701X4**



Mixing ratio 1:1
Inner diameter 4.2 mm
Colour yellow

Product
Dynax® light

40 pieces **D4970X5**
100 pieces **D49701X5**



Mixing ratio 1:1
Inner diameter 2.5 mm
Colour brown

Product
Fixtemp cement

40 pieces **D4970X6**
100 pieces **D49701X6**



Mixing ratio 5:1
Inner diameter 6.0 mm
Colour yellow

Product
Zerisil® soft

15 pieces **D4982**
50 pieces **D4981**

Index

A			
Application tips – black	74		
Application tips – transparent	74		
B			
Base – with castors, for Labormat TH	43		
Bayonet ring	74		
BioBleach® hard – 0.5 mm	27		
BioBleach® soft – 1 mm	27		
Biolit D	27		
Biolon	27		
BlueSpray	20		
C			
Canal piercing instrument	48		
Castdon Base powder	49		
Castdon Bonding	47		
Castdon Color Monomer	50		
Castdon Color	50		
Castdon dosing aids	47		
Castdon flask	47		
Castdon Intense	50		
Castdon Monomer	47, 50		
Castdon Polymer – pink-opaque	47		
Castdon Polymer – pink-transparent	47		
Castdon Polymer – transparent	47		
Castdon Starter Kit – pink-opaque	46		
Castdon Starter Kit – pink-transparent	46		
Cenit L	57		
Cleaner	52		
Connection hoses – for Dosper M3-M5/evo	59		
Cutters	35		
D			
DentureArt System Pack	49		
DocSnoreNix®	30–31		
Dosper evo	58		
Dreve Label	34		
Dreve Mouthguard Box	34		
Drufofen H	28		
Drufofen W	28		
Drufofen scan	24		
Drufofen scan S	23		
Drufosmart	25		
Drufosmart scan	25		
Drufoplast – 2 mm	29		
Drufoplast – 3 mm	29		
Drufoplast – 3 mm, (incl. tray handle)	29		
Drufoplast tray handles – formed	29		
Drufosoft®	33		
Drufosoft® bicolour	33		
Drufosoft® colour	33		
Drufosoft® colourmix	34		
Drufosoft® Primer	34		
Drufosoft® pro – 3 mm	28		
Drufosoft® tricolour – 3 mm	33		
DS 50 Injector 1:1	74		
DS 50 Injector 4:1	74		
DS 50 Injector 10:1	74		
Dublisil® 15	60		
Dublisil® 15 speed	60		
Dublisil® 20	61		
Dublisil® 20 speed	60		
Dublisil® 22 plus	61		
Dublisil® 30	61		
Dublisil® flask – with foamed space maintainer	62		
DuoSep	67		
Dynax® adhäsiv	11		
Dynax® adhäsiv plus	11		
Dynax® clear	8		
Dynax® heavy body	9		
Dynax® light	9		
Dynax® mono	10		
Dynax® putty	9		
E			
EyeVolution®	54		
F			
Fillin – blocking out material	36		
Filter mats	43		
Finishing Liquid	36		
Fixtemp C&B 4:1	14		
Fixtemp C&B 10:1	14		
Fixtemp cement	15		
Flask basket	43		
Foamed space maintainers – for Dublisil® flask	62		
Foil scissors	35		
FotoDent® cast	19		
FotoDent® denture	18		
FotoDent® flash	17		
FotoDent® gingiva	19		
FotoDent® guide	18		
FotoDent® model	19		
FotoDent® setup	19		
FotoDent® splint	18		
FotoDent® tray	18		
Funky tool	37		
G			
Gelon	48		
GipsEx	72		
Granules – recommended for Drufofen units	36		
Grinding caps – pointed	72		
Grinding caps – round	72		
Grinding cap holder – pointed	72		
Grinding cap holder – round	72		
GumQuick®	66		
GumQuick® implant	67		
GumQuick® scan	21		
H			
Hardener paste	64		
I			
Isolat Film	35, 48		
Isopor rubber	38		
K			
K7 insert – for Drufofen units	37		
Kombiplast – 2 mm	29		
Kombiplast – 3 mm	29		
Kombiplast – 4 mm	29		
L			
Labormat SD	42		
Labormat TH	42		
Laborsil 70	64		
Laborsil 90	64		
Laborsil pro 70	63		
Laborsil pro 90	63		
Lightdon Bonding	57		
Lightdon Gel	31		
Lightdon Splint resin	57		
Lightdon Splint Starter Kit	57		
Lightpaint On colour powder	51		
Lightpaint On Set (acc. to Klaus Mütterthies)	51		
Lightplast base plates – natural	56		
Lightplast base plates – pink	56		
Lightplast lacquer	56		
Liquid	52		
M			
Material reservoirs for Dosper M3-M5/evo	59		
MaxiFresh™ cleaning tablets	35		
MegaBase® 2K Lacquer	69		
MegaBase® adhesive	68		
MegaBase® silicone	68		
MegaBase® Starter Kit	68		
Mixing palette – impervious to light, with lid	52		
Mixing tips – 4:1/10:1, light blue	75		
Mixing tips – 5:1, yellow	75		
Mixing tips – brown	75		
Mixing tips – for Dosper M4, transparent	75		
Mixing tips – for Dosper M5/evo, pink	75		
Mixing tips – green	75		
Mixing tips – light blue	75		
Mixing tips – pink	75		
Modralit® 3K Set	73		
MultiSpot®	55		
N			
NanoVarnish	55		
O			
Odontosil 2K Lacquer	70		
Odontosil 50	70		
Odontosil 60	70		
P			
Piercing cutter	35		
Plaquit	56		
Polymax 1 (120 °C)	40		
Polymax 1 (95 °C)	40		
Polymax 3	41		
Polymax 5	41		
Pressure insert – for Drufofen units	37		
Pressure polymerisation insert – for Drufofen units	37		
Q			
QuickSnick – Remover stick	69		
R			
Refined steel granules	36		
Regofix opak	13		
Regofix transparent	13, 65		
S			
S-50 mixing head retrofitting set	59		
Sample assortment thermoforming blanks	38		
Separator	73		
Silfix	65		
Silicone grease	36		
Siliform	48		
Steel granules	36		
StoneBite®	12		
StoneBite® scan	20		
Storage rack, large – for 21.2 l (25 kg) canisters	59		
Storage rack, small – for 5.1 l (6 kg) canisters	59		
Surface	52		
Square cutter	35		
T			
Tips – transparent	74		
Tips – yellow	74		
TrayFix	35		
U			
UltraTrimm heavy	71		
UltraTrimm light	71		
UltraTrimm medium	71		
Unisol E	43		
Unisol W	43		
UZF (Underlay blank) – 120 x 0.1 mm	30		
UZF (Underlay blank) – 42 x 0.1 mm	30		
V			
Veins	50		
W			
Workout set thermoforming technique	38		
X			
X-ray opaque stripes	34		
Z			
Zerosil® soft	10		

§ 1 Application

- (1) The terms and conditions set out below shall form part of the agreement concluded with us.
- (2) Our General Terms and Conditions shall apply in accordance with the most recent version and to all subsequent transactions without any need of express reference thereto or agreement thereon at the conclusion of such transaction and shall also apply if we perform delivery despite our knowledge of differing or contrary terms.
- (3) These terms and conditions shall only apply vis à vis merchants, governmental entities, or special governmental estates within the meaning of § 310 (1) BGB (German Civil Code).
- (4) These terms and conditions apply exclusively. Differing or contrary terms shall not apply except if expressly agreed upon in writing.

§ 2 Offers, Acceptance

- (1) Our offers shall not be binding; in particular with reference to quantities, price and delivery time.
- (2) Orders placed by the Buyer shall not be regarded as accepted before these have been confirmed by us in writing. If we should fail to confirm an agreement in writing which we have entered into verbally or in a telephone conversation, then our invoice shall be regarded as confirmation.

§ 3 Prices

- (1) Our prices are ex works, exclusive of any statutory VAT which shall be payable at the date of delivery and exclusive costs of packaging and delivery and transport insurance. The buyer will be charged separately for these costs, except as otherwise expressly agreed upon.
- (2) If, as a result of a change of law between the agreement date and the delivery date, additional or increased charges – in particular duties, levies, currency compensation payments, shall be payable, then we shall have the right to increase the purchase price accordingly. The same shall apply to any fees for examination.

§ 4 Payment

- (1) Payment shall be made within 30 days strictly net from date of invoice. New export customers are only supplied after payment is received, i. e. cash in advance.
- (2) We shall accept promissory notes and cheques only upon specific arrangement and only on account of payment. Any fees for discount bills or promissory notes shall be at the expense of the Buyer and immediately payable.
- (3) If the invoice amount shall not have been settled within 30 calendar days after the date of invoice or as at another due date, then we shall without the need to a separate warning notice have the right to recover default interest in a proven amount but in any event an amount equalling 8 % above the base rate of the European Central Bank.
- (4) From the second reminder we will charge a handling fee of 5 €. The handling fee will be 8 € for the third reminder, 10 € for the fourth and 15 € for the fifth and last reminder.
The buyer is permitted to show that damage has either not occurred or is substantially less than the lump sum.
- (5) If the Buyer's business shall be operated beyond the ordinary course of business which shall include, without limitation, acts of seizure or a situation where a protest in relation to promissory notes or cheques has been made, payments shall be delayed or even discontinued or judicial or out of court settlement or insolvency proceedings shall have been petitioned or opened or proceedings in accordance with the German insolvency Act shall have been petitioned, then we shall have the right to declare all our claims arising from the business relationship as immediately payable, even if we shall have accepted promissory notes or cheques. The same shall apply if the Buyer shall be in payment default towards us or other incidents shall surface which give rise to doubts about its creditworthiness. Moreover, we may in such event demand prepayments or a security deposit or rescind the agreement.

§ 5 Quantity, Quality, Labelling

- (1) At all times, we shall have the right for custom-made products to supply 10 % more or less than the agreed amount.
- (2) We shall have the right to reasonable delivery in instalments.

§ 6 Shipment, Delivery

- (1) The goods shall be transported insured and in any event at the risk of the Buyer. This shall also apply in cases of any delivery

free of charge and regardless of which means of transport shall be used. Any transport insurance shall be provided only upon express demand of the Buyer. Any costs arising therefrom shall be at the expense of the Buyer only.

- (2) The selection of the place of dispatch and the transport route and the means of transport shall, in the absence of any written arrangement dictating otherwise, be subject to our reasonable discretion and be without liability for the cheapest and fastest transport.
- (3) If the Buyer provides the means of transport, then he shall be responsible for its availability on time. We shall immediately be informed of any delays. Any costs arising therefrom shall be at the expense of the Buyer.
- (4) Our delivery obligation shall at all times be subject to timely and orderly receipt of the goods from our own suppliers.
- (5) Unless otherwise expressly agreed in writing, any indicated time of delivery or unloading shall be non-binding.
- (6) Any inability to supply as a result of force majeure or other unforeseen incidents outside our responsibility including, without limitation, strike, lock out, acts of public authorities, subsequent cease of export or import opportunities and our reservation of timely supply from our own supplies in accordance with subsection (5) above shall, for their duration and in accordance with their impact, relieve us from the obligation to comply with any agreed time for delivery and unloading. Further, the above inability to supply gives us the right to withdraw from the contract without giving the right to the Buyer to claim for indemnity or other rights.
- (7) If any agreed time of delivery or unloading shall be exceeded and there shall be no incident referred to in subsection (6) above, then the Buyer must specify to us a reasonable cure period of minimum two weeks. If we shall fail to meet such deadline also, then the Buyer shall have the right to rescind the agreement but shall have not right to seek compensation for breach of contract or default unless in cases of wilful misconduct or gross negligence on our part.

§ 7 Duty of Inspection and Objection

- (1) Upon delivery at the agreed destination or in the event of self supply upon taking possession, the Buyer shall immediately control the goods and conduct a quality check representatively on a spot check basis.
- (2) The Buyer shall notify the defect directly upon receipt of the goods. If the Buyer fails to notify this defect the goods shall be deemed to be accepted unless it is a defect that was not visible during the control. Further, we refer to §§ 377 et seq. HGB (commercial code).

§ 8 Warranty

- (1) A cancellation of the contract, in whole or in part, is possible as long as the order has not been processed. We do not accept any responsibility for cancellation requests which are not received in due time. The Buyer is obligated to accept the order if the cancellation is submitted late. In individual cases, fair consideration will be given to requests for retroactive cancellation or the exchange of defect-free consignments. We reserve the right to charge lump-sum compensation for expenses in the amount of 10 % of the net order value in such cases. Exchanges or return deliveries are subject to our prior agreement and may not be shipped freight forward.

If the Buyer, contrary to agreement, returns the goods freight forward, he shall be obligated to bear the costs billed to him by our company to cover the expenses. The costs in this case shall comprise the remuneration which is due and lump-sum compensation for expenses in the amount of 10 % of the net order value.

- (2) In case the defects are not remedied within a reasonable time or if the repairs fail to remedy the defects, the Buyer is entitled to reduce the purchase price or to withdraw from the contract.
- (3) The right of the Purchaser to bring actions arising out of defects shall in all cases be in lapse 1 year after the date of delivery.
- (4) The warranty obligation does not refer to natural wear and tear nor to damage occurring after the transfer of risk due to improper or unsuitable handling, excessive stressing, unsuitable operating material, and chemical, electrochemical or electrical influences of a nature not provided for according to the contract. On improper alterations or repairs or maintenance carried out by the Purchaser or third parties our warranty obligations and liability for consequences caused thereby are rendered void.
- (5) Our retreated units are thoroughly checked before they are sold. Anyhow, we are not liable for any material deficiency.

§ 9 Liability

Otherwise we are liable according to legal rules as far as we have culpably infringed a constitutive contract obligation; in this case however the liability for indemnity is limited to the predictable, typically incurred damage. The liability due to culpable injury of life, body or health remains unaffected. The same is valid for the compulsory liability according to the product liability rule. Any liability not expressly provided for above shall be disclaimed.

§ 10 Retention of Title

- (1) We shall retain full title of the goods that have been delivered until the Buyer has discharged all claims arising from the business relationship which shall include any account balance and claims from refinancing or reverse promissory note.
- (2) The Buyer shall have the right to dispose of the goods delivered by us within the ordinary course of business and shall be authorised to collect any receivables arising from the resale of goods. The authority granted hereunder shall cease in the cases referred to in § 4 (5) above. Moreover, we may withdraw the sales authority of the Buyer through written notice if it shall be in breach of any obligation owed to us and shall in particular be in payment default or we shall become aware of other incidents that give rise to doubts about its creditworthiness.
- (3) The Buyer's right to process the goods delivered shall also be subject to the limitations set out in sub-section (2) above. The Buyer shall not acquire title to the fully or partly processed goods; the processing shall be free of charge for our benefit as Manufacturer in the sense of § 950 BGB (German Civil Code). If we should, for whatever reason, lose our rights under the retention of title, then it is hereby agreed between us and the Buyer that we shall acquire title upon processing of the goods and the Buyer shall remain custodian of the goods which shall be free of charge.
- (4) If the goods in which we have retained title shall be inseparably assembled or mixed with goods that are third party property, then we shall acquire co-title in the new goods or the mixed stock. The proportion of title shall follow from the proportion of the invoice value of the goods delivered by us under retention of title and the invoice value of the other goods.
- (5) Goods in which we shall acquire sole or co-title in accordance with subsection (3) and (4) shall, the same as with regard to subsection (1) above, be regarded as goods delivered under retention of title for the purposes of the following paragraphs.
- (6) The Buyer hereby assigns to us all claims arising from the resale of the goods delivered under retention of title. Such claims shall also include claims against the bank which, within the scope of such sale, shall have issued or confirmed a letter of credit for the benefit of the Buyer (=reseller). We hereby accept such assignment. If the goods delivered under retention of title shall be a processed good or a mixed stock, where, in addition to the goods delivered by us, only such goods exist that are either the Buyer's property or a third party property as a result of a (simple) retention of title, then the Buyer shall assign all of the claim arising from the resale. In the other case, i. e. in the event of a conflict between pre-assignment claims by other suppliers, we shall be entitled to receive any resale proceeds on a pro rata basis which shall be determined in proportion to the invoice value of our goods and the other processed or mixed goods.
- (7) Insofar as the above securities exceed the secured claim by more than 10%, we are obligated, upon our election, to release such securities upon the purchaser's request.

§ 11 Final Provisions

- (1) This contract shall be governed by the laws of the Federal Republic of Germany excluding the Convention on Contracts for the International Sale of Goods.
- (2) Place of performance and exclusive place of jurisdiction for all disputes arising out of or in connection with this contract shall be Unna/Germany.
- (3) The invalidity of any provision of these general terms and conditions shall not affect the validity of the other provisions. Invalid provisions shall be deemed to be replaced by such valid provisions that shall be suitable to implement the economic purpose of the deleted provision to the greatest extent possible.

We cannot be held responsible for false statements in this catalogue and their consequences. Delivery of our products is effected according to our general terms and conditions. Technical changes reserved. We do not take any responsibility for the authenticity of colours in this catalogue.

Dreve Dentamid GmbH
Max-Planck-Straße 31
59423 Unna

Phone +49 2303 8807-0
Fax +49 2303 8807-55
E-mail info@dreve.de
Internet www.dreve.com

Design & Product photography
Dreve ProDiMed GmbH
Advertising Department
Einsteinstraße 38
59423 Unna



Dreve Dentamid GmbH

Max-Planck-Straße 31 • 59423 Unna/Germany

Phone +49 2303 8807-37 • Telefax +49 2303 8807-55

dentamid@dreve.de • www.dreve.com/dentamid