

PLASTER SEPARATOR

Item No. | 10001

with sealed, 4-chamber clarification system

› no unpleasant odors › no spillage › easy to clean

Transparent container with plastic sheet inlay and snap-shut locking system. Transparency of plaster separator enables visual monitoring of sludge. Plastic bag inlay ensures easy and rapid cleaning.

German utility models Nr. 202010014091.9

TECHNICAL DATA

Hight, diameter	320 mm, 340 mm
Discharge height	245 mm
Discharge connector	Ø 50 mm
Capacity	14 liters
Inlet connection	1 1/2 ", Ø 28 mm
Weight	2,1 kg



Position inlet in the upper chamber.



For cleaning detach the connection of the drain, unscrew closure cap, remove the remaining water with our drawing and pull out the insert.



Remove drain adapter.

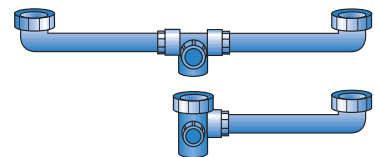


Bind the foil inlay under the outlet opening and remove.
Temp. max 80°C

ACCESSORIES

20004 | Replacement inlay plastic bags, set of 25, for plaster separator (image not shown)

20202 | Discharge connector for double sink 120 mm - 600 mm / 1 1/2 "



60086 | Discharge connector for double sink 80 mm - 300 mm / 1 1/2 "

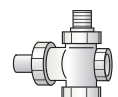
70073 | Plaster separator supply pipe, straight, 1 1/2 "



70074 | Plaster separator supply pipe, 90°, 1 1/2 "



90027 | T-connector for double water supply



70115 | Flexible discharge hose, L: 1,000 mm, 50 mm, Conn.: 40/50 mm



70125 | Flexible discharge hose, L: 750 mm, 50 mm, Conn.: 40/50 mm



70124 | Flexible discharge hose, L: 500 mm, 50 mm, Conn.: 40/50 mm



CONDITIONING UNIT

for waste water containing gypsum plaster

Waste water containing gypsum plaster can be easily conditioned at all work stations in order to retain

the dissolved gypsum. Our metering devices guarantee an easy, effective, and practical application.

IR-METERING DEVICE with infrared sensor for sink basins

Item No. | 20153

TECHNICAL DATA

Height: 120 mm, Width: 70 mm, Depth: 100 mm

Elec. parameters: 230 V / 50 Hz

Weight: 500 g

Sensor range adjustable from 0 - 600 mm



TR-METERING DEVICE for metering with joint gypsum trimmer

Item No. | 20151

TECHNICAL DATA

Height: 120 mm, Width: 70 mm, Depth: 100 mm

Elec. parameters: 230 V / 50 Hz

Load: min. 300 W - max. 3.000 W

Weight: 500 g



DENTAFLOC

When using Dentafloc, the fallout of gypsum silt in separators is greatly accelerated. Cleaning becomes much easier.

20154 | **Dentafloc** 5 liters

20161 | **Dentafloc** 10 liters



for plaster separator

The practical complement to the plaster separator for the uncomplicated and quick removal of the residual water.

Remove the cover of the plaster separator. Submerge the pumping tube into the residual water and hang the flexible hose into a separate container. The up and down movement of the pump lever easily and effectively drains the water through the pump, via the hose, to the separate container. The plaster is disposed of in the usual manner.

TECHNICAL DATA

Overall length:	530 mm
Stroke length:	135 mm
Displacement volume:	100 ml/stroke
Aluminium design	

Utility Model No. 2020110014673
Community Design No. 001804931-0001



To clean small parts, dental work and instruments, as well as for occasional use in large objects.

Fats, waxes, adhesives, mordant, dirt and adhesions are removed gently and thoroughly.

The steam cleaner DR-1 operates environmentally friendly with no chemical additives.

Automatic filling regulates uninterrupted workflow.

- Automatic filling
- Steam dosed continuously
- Operation via footswitch
- Boiler pressure gauge

TECHNICAL DATA

Height:	41 cm
Width:	50 cm
Depth:	21 cm
El.-results:	230 V/ 50 Hz/ 2 kW
Hose connection:	3/4 "
Weight:	27 Kg



EXTRACTOR

Item No. | 20192

with activated charcoal filter

› protects against hazardous vapors

Right from the start you will be able to avoid the health risks of hazardous vapors. This user-friendly exhaust system allows you to target the ever-increasing risks from chemical substances. The degree of separation for insulation fluid is 84%, for Monomer 89%, if the exhaust system is used with the activated charcoal filter, and if the filter is regularly replaced after approx. 50 operating hours. A light sensor automatically turns on the system during countertop operation. Upon completion of the work process, the system will turn off with some time delay.

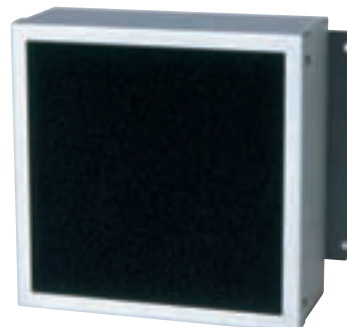


TECHNICAL DATA

Height:	260 mm
Width:	220 mm
Depth:	260 mm
Elec. parameters:	230 V / 50 Hz, 100 W
Weight:	6 kg



20206 | Filter cartridge for Extractor (new)



DISINFECTION TUBS

> with mesh bottom, drip pan and lid

Disinfection tubs made of plastic for disinfection of instruments or moldings. Bath is equipped with a mesh bottom for disinfection items, a drip pan, and a lid.

TECHNICAL DATA

Height:	120 mm
Width:	340 mm
Depth:	210 mm
Filling volume:	4 Liter
Weight:	1 kg

DISINFECTION TUB with transparent lid



Item No. | 10039

DISINFECTION TUB with white lid



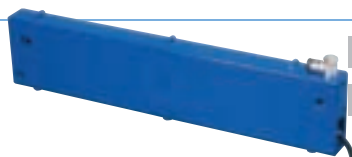
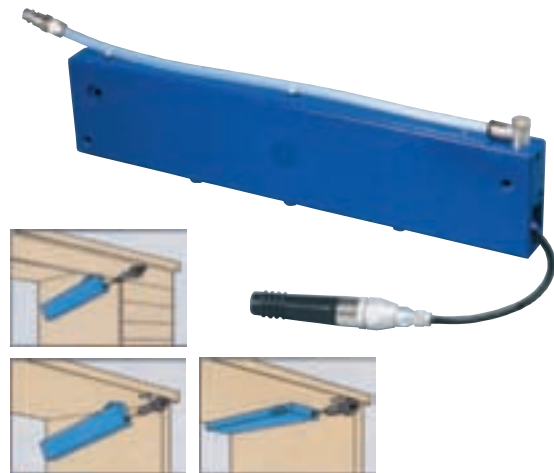
Item No. | 10040

AIR HOSE RETURN DEVICE with 6/3 mm hose, air blower with air adjustment valve, connector hose and air socket

Item No. | 20148/20238

Space-saving, gentle tube routing with definitive stop (no pull) during use. Compact unit, for installation anywhere.

TECHNICAL DATA	20148	/	20238
Height: 90 mm, Depth: 30 mm			
Length:	420 mm	/	470 mm
Tube extension:	550 mm	/	690 mm
Connector:	8/6 mm	/	8/6 mm
Discharge:	6/3mm	/	6/3mm
Weight:	700g	/	750g



20144 | Air hose return device with 6/3 mm hose 420 mm

20237 | Air hose return device with 6/3 mm hose 470 mm



70102 | Holder straight for fitted air blower (drill hole \varnothing 33 mm)

70034 | Holder slanted 30° for fitted air blower (drill hole \varnothing 33 mm)

70110 | Holder straight for air blower, for sub-structure assembly

70111 | Holder slanted 30° for air blower, for sub-structure assembly



50045 | Air blower with connector for 4/3 mm hose

50075 | Air blower with connector for 6/4 mm hose

50059 | Air blower with connector for 8/6 mm hose

RETURN DEVICE for handpiece cable

Item No. | 20178/20239

A space saving gentle tube guidance with definitive stop (no pulling) during use. Compact unit, for installation anywhere.

TECHNICAL DATA	20178	/	20239
Height: 90 mm, Depth: 30 mm			
Length:	420 mm	/	470 mm
Tube extension:	550 mm	/	690 mm
Weight:	500g	/	550g



70113 | Holder for handpiece \varnothing 28 mm (drill hole \varnothing 37 mm)

70116 | Holder for handpiece \varnothing 30 mm (drill hole \varnothing 37 mm)

70112 | Holder for handpiece \varnothing 32 mm (drill hole \varnothing 37 mm)

GAS FITTINGS AND GAS TUBES

for laboratory tables

Item No. | 30161

Gas angle tap

Feed/discharge with
hose nipple \varnothing 10 mm
Fitting dimension: \varnothing 21 mm
Length: 45 mm



Item No. | 30172

Gas angle tap

Feed with
gas hose 1000 mm
Connection 1/2"
Discharge
Nipple discharge \varnothing 10 mm
Fitting dimension: \varnothing 21 mm
Length: 45 mm



Item No. | 30171

Gas armature

Feed/discharge with
hose nipple \varnothing 10 mm
Fitting dimension: \varnothing 40 mm
Length: 30 mm



Safety gas hose

Diameter 18/10 mm, operating pressure up to 100 mbar

Length 500 mm, DIN 30665

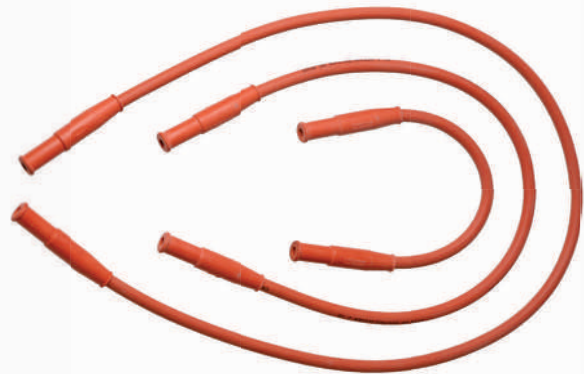
Item No. | 30162

Length 1000 mm, DIN 30665

Item No. | 30060

Length 1500 mm, DIN 30665

Item No. | 30163



Item No. | 30169

Gas armature

Feed/discharge with
gas hose 1000 mm
Connection 1/2"
Fitting dimension:
 \varnothing 40 mm
Length: 30 mm



Item No. | 30160

Gas hose

Diameter 14/10 mm,
Operating pressure up to 100 mbar,
DIN 30664 for Bunsen burners
per meter available



Item No. | 30170

Gas armature

Feed with
gas hose 1000 mm
Connection 1/2"
Discharge
Nipple discharge \varnothing 10 mm
Fitting dimension: \varnothing 40 mm
Length: 30 mm



TR·BOX MINI

Item No. | 20218

Transportation and storage box for models and work documents

- › suitable for all transportation needs
- › stackable › robust › lightweight

available in the following colors:

light grey **RAL 7035**

anthracite **RAL 7016**

TECHNICAL DATA

Width: 265 mm

Depth: 171 mm

Height: 71 mm

Weight: 0,45 kg

20243 | Insert for 6 Models

20223 | Lid padding

20244 | Floorpadding



TR·BOX MINI

Item No. | 20230

Transportation and storage box for models with socket and work documents

- › suitable for all transportation needs
- › stackable › robust › lightweight

available in the following colors:

anthracite **RAL 7016**

light grey **RAL 7035**

sapphire blue **RAL 5003**

TECHNICAL DATA

Width: 268 mm

Depth: 171 mm

Height: 87 mm

Weight: 0,45 kg

20225 | Insert for 6 Models

20221 | Lid padding

20222 | Floorpadding



TR·BOX MIDDLE

Item No. | 20217

Transportation and storage box for models and work documents

› suitable for all transportation needs

› stackable

› robust

› lightweight

available in the following colors:

sky blue RAL 5015

emerald green RAL 6001

black RAL 9004

ember red RAL 3002

sapphire blue RAL 5003

light grey RAL 7035



TECHNICAL DATA

Width: 395 mm

Depth: 295 mm

Height: 105 mm

Weight: 1,6 kg



ACCESSORIES

20214 | Lid padding for TR-Box

20215 | Floor padding for TR-Box

20224 | Insert (for 6 Models and 2 empty compartments)

TR·BOX

Transportation and storage box

for articulate TMJ, facemasks, models and work documents

- > adjustable interior
- > suitable for all transportation needs
- > stackable > robust > lightweight

available in: **sky blue RAL 5015**

TECHNICAL DATA

Width:	395 mm
Depth:	295 mm
Height:	210 mm
Weight :	2 kg



10034 | TR Box

Articulate TMJ - Facemask insert



10035 | TR Box

Articulate TMJ - Articulate TMJ insert



10036 | TR Box

Articulate TMJ - Empty insert



10037 | TR Box

Empty insert - Facemask insert



10038 | TR Box

Empty insert - Empty insert



20212 | TR Box

Empty



ACCESSORIES

20207 | Facemask insert

20208 | Articulate TMJ left

20209 | Articulate TMJ right

20210 | Empty insert right

20211 | Empty insert left

20213 | Facemask cover

20214 | Lid padding for TR-Box

20215 | Floor padding for TR-Box

EXTRACTION CABINET

with light, ventilation and electrical outlets

People's safety at work today is more important than ever. More and more substances have been recognized as health hazardous. Therefore, contact with dangerous work materials should be avoided. Dental laboratories pose many harmful substances when inhaled or exposed to as vapors. For example, these include acid and galvanization baths (silver, copper, gold)

and ultrasonic solution baths. In case of noise-producing machines, hearing protection shall require enclosure of the noise source. Our exhaust cabinet offers a simple and secure solution to these problems within your company.

EXTRACTION CABINET without rinsing basin

Item No. | 10032

TECHNICAL DATA

Height: 1.000 mm, Width: 1.000 mm, Depth: 500 mm

Voltage: 230 V / 50 Hz / 180 W

Extraction volume: 430 m³ / h

Pressure stat. (max): 340 Pa



EXTRACTION CABINET with rinsing basin

Item No. | 10022

TECHNICAL DATA

Height: 1.000 mm, Width: 1.000 mm, Depth: 500 mm

Voltage: 230 V / 50 Hz / 180 W

Extraction volume: 430 m³ / h

Pressure stat. (max): 340 Pa

Water connection: 3/4 "

Water discharge: 22 mm ø



20098 | **Sub-frame** for extraction cabinet, made of anodized aluminium profile

TR·BOX

Art.-No. | 20235

Transport and storage box for articulators

> lightweight > lockable >

Aluminium design

TECHNICAL DATA

Width:	250 mm
Depth:	220 mm
Height:	190 mm
Weight:	1,6 kg



WATER CONTROL SYSTEM WITH LIMIT SWITCH

for cold water

Use the advantages of this technology, to reduce unnecessary water consumption and to keep your hands free for more important tasks. Existing taps can be reequipped with the water control system.

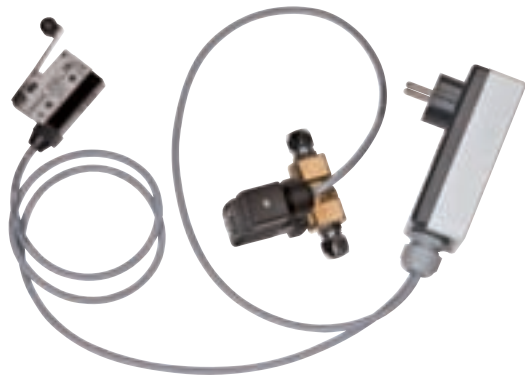
Art.-No. | 10048

TECHNICAL DATA

Solenoid valve connections: \varnothing 10 mm

Electrical values: 230 V / 50 Hz / 8 W

Weight: 1,0 kg



WATER CONTROL SYSTEM WITH LIMIT SWITCH

for hot and cold water

Art.-No. | 10047

TECHNICAL DATA

Solenoid valve connections: \varnothing 10 mm

Electrical values: 230 V / 50 Hz / 16 W

Weight: 1,5 kg



CONTACTLESS WATER CONTROL SYSTEM

Foot-operated water control system

for comfortable tapping

Make use of advantages of this technology, to control needless water consumption and to have your hands free for other things. The water control system can be fitted to existing water taps at any time.

FOOT-OPERATED WATER CONTROL SYSTEM

For cold water

Item No. | 10028

TECHNICAL DATA

Magnetic valve connector:	ø 10 mm
Electrical values:	230 V / 50 Hz / 8 W
Weight:	1 kg



FOOT-OPERATED WATER CONTROL SYSTEM

For cold and warm water

Item No. | 10026

TECHNICAL DATA

Magnetic valve connector:	ø 10 mm
Electrical values:	230 V / 50 Hz / 16 W
Weight:	1,5 kg



CONTACTLESS WATER CONTROL SYSTEM

Sensor water control system for comfortable tapping

Make use of advantages of this technology, to control needless water consumption and to have your hands free for other things. The water control system can be fitted to existing water taps at any time.

SENSOR WATER CONTROL SYSTEM for cold water

Item No. | 20177

TECHNICAL DATA

Magnetic valve connector:	∅ 10 mm
Electrical values:	230 V / 50 Hz / 8 W
Sensor range:	0 - 600 mm
Weight:	0,8 kg



SENSOR WATER CONTROL SYSTEM for cold and warm water

Item No. | 20179

TECHNICAL DATA

Magnetic valve connector:	∅ 10 mm
Electrical values:	230 V / 50 Hz / 16 W
Sensor range:	0 - 600 mm
Weight:	1,5 kg



DUST/SAND PRE-SEPARATOR

Item No. | 20204

transparent container

with plastic sheet inlay and snap-shut locking system

The pre-separator may be incorporated in any exhaust system, independent of the substance to be extracted. By using several pre-separators, it is possible to retain and dispose of various types of substances (sand, plaster) separately. **Inclusion of a pre-separator in your exhaust system will considerably increase the operating life of your filter.**



TECHNICAL DATA

Height	350 mm
Diameter	340 mm
Fittings	Ø 22 - 56 mm
Weight	2 kg



Connect hose from dust/sand pre-separator to top chamber.

1



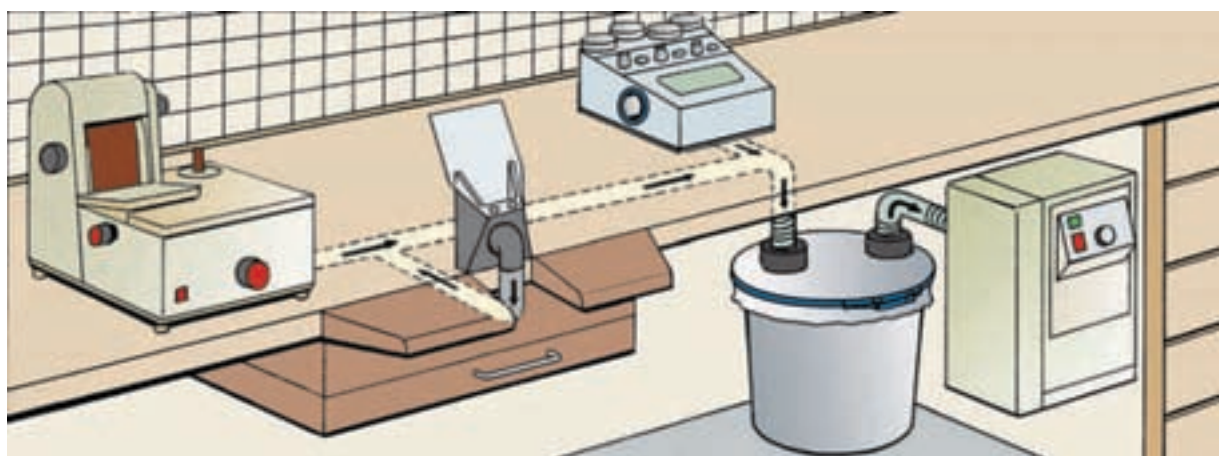
Remove separator insert.

2



Securely tie plastic bag and discharge.

3



ACCESSORIES

20004 | Replacement bags, set of 25, for dust/sand pre-separator (image not shown)

STAINLESS STEEL CARE SET

Item No. | 20008

BREGLIT

Stainless steel liquid care product (1000 ml)



A special BDT product for use in dental laboratories on all stainless steel surfaces. Fingerprints, marks, stains, and tarnishes disappear after treatment. The protective film prevents quick deposits of gypsum, lime, etc.

Item No. | 20001

BREGLIT

Stainless steel care product (400 ml)



A special BDT product for use in dental laboratories on all stainless steel surfaces. Fingerprints, marks, stains, and tarnishes disappear after treatment. The protective film prevents quick deposits of gypsum, lime, etc.

Item No. | 20013

BREGLIT

Stainless steel basic cleanser (500 ml)



The liquid scouring agent removes stubborn dirt and stains on all stainless steel surfaces gently, yet thoroughly.

Item No. | 20076

LIMESTONE REMOVAL AGENT

(500 ml)



Antibacterial, bio-degradable

POLYMERIZATION BATHS

for 2 cuvettes

IVO-2

Stainless steel bath, electronic water level control, micro-chronometer, continuous temperature control, built-in air sockets, indirect heating (no limestone deposits on heating elements).

Item No. | 10002

TECHNICAL DATA

Height: 300 mm, Width: 350 mm, Depth: 470 mm

Elec. parameters: 230 V / 50 Hz, 1,5 kW

Air pressure: 6 bar

Hose connection: 3/4 "

Discharge hose: 22 mm ø

Weight: 12 kg



IVO-2 special

Stainless steel bath, electronic water level control, continuous temperature control, indirect heating (no limestone deposits on heating elements).

Item No. | 10004

TECHNICAL DATA

Height: 260 mm, Width: 350 mm, Depth: 360 mm

Elec. parameters: 230 V / 50 Hz, 1,5 kW

Hose connection: 3/4 "

Discharge hose: 22 mm ø

Weight: 8 kg



IVO-2 manual

Stainless steel bath, continuous temperature control, indirect heating (no limestone deposits on heating elements)

Item No. | 10005

TECHNICAL DATA

Height: 260 mm, Width: 350 mm, Depth: 360 mm

Elec. parameters: 230 V / 50 Hz, 1,5 kW

Discharge hose: 22 mm ø

Weight: 6,5 kg



POLYMERIZATION BATHS

for 4 cuvettes

IVO-4

Stainless steel bath, electronic water level control, micro-chronometer, continuous temperature control, built-in air sockets, indirect heating (no limestone deposits on heating elements).

TECHNICAL DATA

Height: 300 mm, Width: 530 mm, Depth: 470 mm

Elec. parameters: 230 V / 50 Hz, 2,5 kW

Air pressure: 6 bar

Hose connection: 3/4 "

Discharge hose: 22 mm \emptyset

Weight: 14 kg

Item No. | 10003



IVO-4 special

Stainless steel bath, electronic water level control, continuous temperature control, indirect heating (no limestone deposits on heating elements).

TECHNICAL DATA

Height: 260 mm, Width: 530 mm, Depth: 360 mm

Elec. parameters: 230 V / 50 Hz, 2,5 kW

Hose connection: 3/4 "

Discharge hose: 22 mm \emptyset

Weight: 9,5 kg

Item No. | 10033



IVO-4 manual

Stainless steel bath, continuous temperature control, indirect heating (no limestone deposits on heating elements).

TECHNICAL DATA

Height: 260 mm, Width: 530 mm, Depth: 360 mm

Elec. parameters: 230 V / 50 Hz, 2,5 kW

Discharge hose: 22 mm \emptyset

Weight: 9 kg

Item No. | 10006



COOLING BATHS

COOLING BATH KW 2 for 2 cuvettes

Item No. | 10017

The cooling baths may be connected directly to the cold water supply or refrigeration unit.

TECHNICAL DATA

Height:	260 mm
Width:	350 mm
Depth:	360 mm
Hose connection:	3/4 "
Discharge hose:	22 mm ø
Weight:	5,5 kg



COOLING BATH KW 4 for 4 cuvettes

Item No. | 10016

The cooling baths may be connected directly to the cold water supply or refrigeration unit.

TECHNICAL DATA

Height:	260 mm
Width:	530 mm
Depth:	360 mm
Hose connection:	3/4 "
Discharge hose:	22 mm ø
Weight:	7 kg



SR-IVOCAP ACCESSORIES

20006 | Spring washers for SR-IVOCAP clamping frame

1 set of 12 pieces
Regular checking and replacement of spring washers will guarantee uniform work results



20005 | Floating balls

ø 20 mm, 1.000 pieces



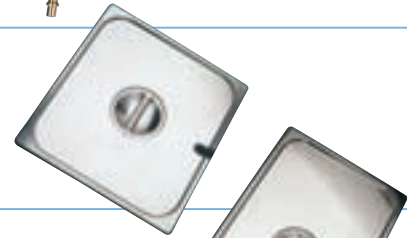
20086 | Spiral hose

with connector for SR-IVOCAP cylinder



20146 | Stainless steel lid

für IVO 2, IVO 2 special, IVO 2 manual



20116 | Stainless steel lid

für IVO 4, IVO 4 special, IVO 4 manual



20075 | Rubber gloves

1 pair of heat resistant gloves



20003 | Dur-Fix Hardener (image not shown)

bag with 200 g, 10 % volume discount for 50 bags

20037 | Wall holder for 2 SR-IVOCAP cylinders

20073 | Stand holder for 2 SR-IVOCAP cylinders

20106 | Wall holder for 2 SR-IVOCAP cylinders with 3 air sockets

20197 | Stand holder for 2 SR-IVOCAP cylinders with 3 air sockets

20038 | Wall holder for 4 SR-IVOCAP cylinders

20039 | Stand holder for 4 SR-IVOCAP cylinders

20107 | Wall holder for 4 SR-IVOCAP cylinders with 6 air sockets

20074 | Stand holder for 4 SR-IVOCAP cylinders with 6 air sockets

